

Project Name: Main Street Sidewalk

MTP Ranking: N/A Total Score: N/A

Estimated Cost: \$324,739

Work Description:

Repair and installation of sidewalks on east side of South Main Street/State Highway 317

Purpose & Needs Statement: Previously funded in 2017-2020 TIP

Project Sponsor: City of Belton

Extents: Along Main St. from Avenue C to Avenue J

Planning and Environmental Linkage Flags: EJ, H



ALL DEPICTED PROJECT ALIGNMENTS ARE CONCEPTUAL

Peak Period Traffic Flow:	Unscored
Safety - Crash Rate:	Unscored
Linkage to Other Plan:	Unscored
Local Priority:	Unscored
Eliminates Barriers:	Unscored
Active Transportation Network Connectivity:	Unscored
Addresses Documented Need:	Unscored
Access to Jobs:	Unscored
Exclusive Path:	Unscored
Connection to School:	Unscored
Area of Identified Hazard:	Unscored
Local Support:	Unscored
Scope of Benefit:	Unscored
Environmental Linkage:	Unscored
Economic Development:	Unscored
Multi-Modal Support:	Unscored
Security & Resilience:	Unscored
Transportation Enhancements & Livability:	Unscored
Sustainability:	Unscored



Project Name: Chisholm Trail Corridor Hike and Bike Phase II

MTP Ranking: N/A Total Score: N/A

Estimated Cost: \$2,670,615

Work Description:
Construct shared-use path consisting of Shared-Use Path for Pedestrians and Bicyclists

Purpose & Needs Statement: Previously funded in 2017-2020 TIP

Project Sponsor: City of Belton

Extents: University Blvd/Judge Baylor Drive intersection to Tiger Drive (Sparta Elementary School)

Planning and Environmental Linkage Flags: EJ, H



ALL DEPICTED PROJECT ALIGNMENTS ARE CONCEPTUAL

Peak Period Traffic Flow:	Unscored
Safety - Crash Rate:	Unscored
Linkage to Other Plan:	Unscored
Local Priority:	Unscored
Eliminates Barriers:	Unscored
Active Transportation Network Connectivity:	Unscored
Addresses Documented Need:	Unscored
Access to Jobs:	Unscored
Exclusive Path:	Unscored
Connection to School:	Unscored
Area of Identified Hazard:	Unscored
Local Support:	Unscored
Scope of Benefit:	Unscored
Environmental Linkage:	Unscored
Economic Development:	Unscored
Multi-Modal Support:	Unscored
Security & Resilience:	Unscored
Transportation Enhancements & Livability:	Unscored
Sustainability:	Unscored



Project Name: S. Belton Shared Use Path Project

MTP Ranking: 12 Total Score: 69.80

Estimated Cost: \$1,790,570

Work Description:

Construct a two-way, 12-foot-wide shared use path for bicycle and pedestrian use.

Purpose & Needs Statement: This lighted trail will expand existing nature trails from Confederate Park and is intended to provide an important link for people on the east side of IH 35 in order to access downtown and other portions of the shared-use path system.

Project Sponsor: City of Belton

Extents: FM 436 to Confederate Park

Planning and Environmental Linkage Flags: EJ, F, P



ALL DEPICTED PROJECT ALIGNMENTS ARE CONCEPTUAL

Peak Period Traffic Flow:	0.00
Safety - Crash Rate:	0.00
Linkage to Other Plan:	4.00
Local Priority:	1.00
Eliminates Barriers:	10.11
Active Transportation Network Connectivity:	6.89
Addresses Documented Need:	6.56
Access to Jobs:	7.22
Exclusive Path:	3.78
Connection to School:	2.67
Area of Identified Hazard:	2.56
Local Support:	3.78
Scope of Benefit:	3.22
Environmental Linkage:	3.44
Economic Development:	3.67
Multi-Modal Support:	2.56
Security & Resilience:	2.67
Transportation Enhancements & Livability:	3.11
Sustainability:	2.56



Project Name: Belton Hike and Bike Trail Extension North

MTP Ranking: 7 Total Score: 73.33

Estimated Cost: \$473,510

Work Description:
Construct 10' hike/bike trail

Purpose & Needs Statement: This lighted trail will expand existing nature trails from Confederate Park and provide a safe connection to communities east of I-35. Greenway and trail projects create healthy recreation and transportation opportunities while building community pride.

Project Sponsor: City of Belton

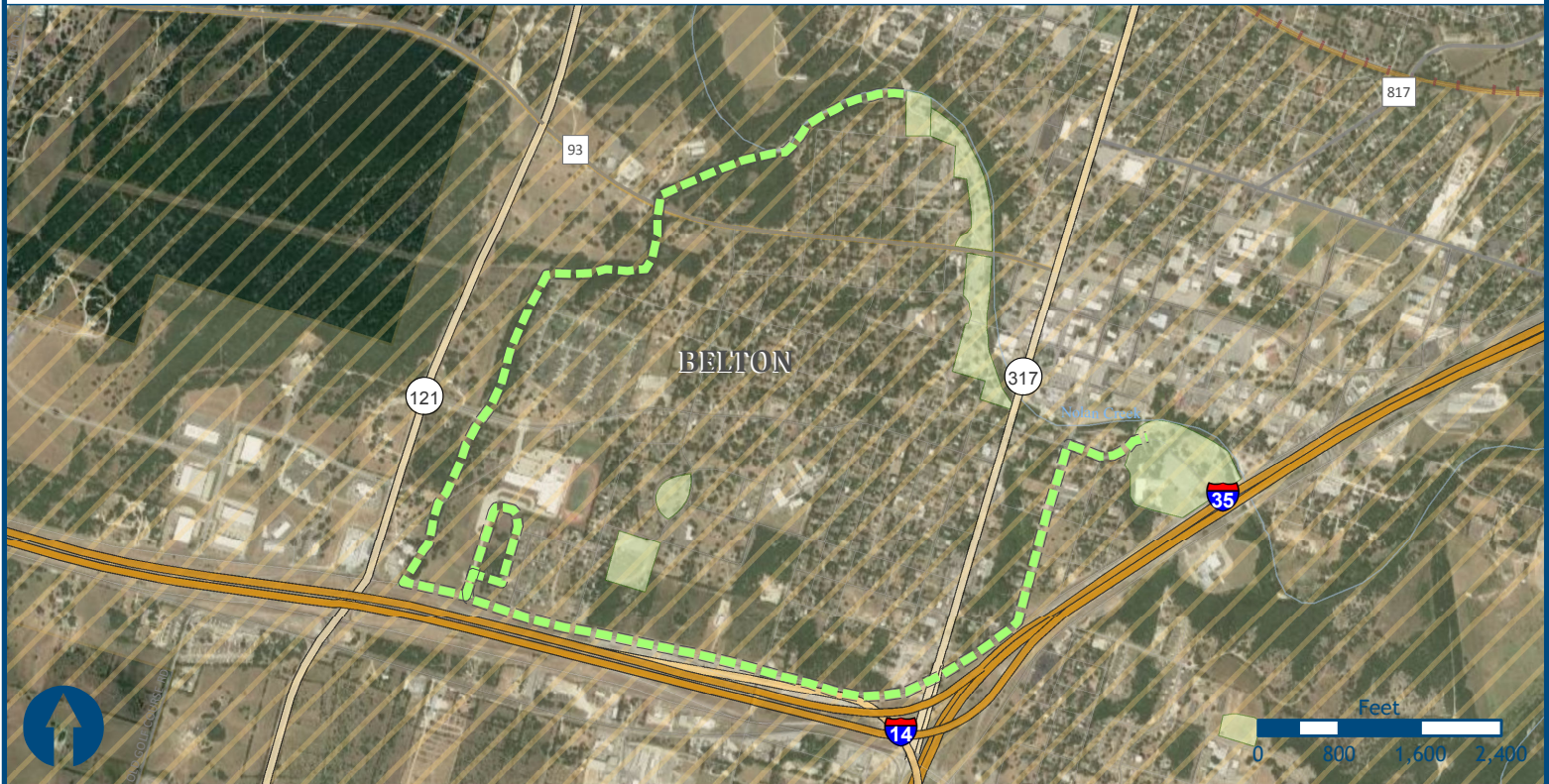
Extents: Confederate Park to Nolan Creek

Planning and Environmental Linkage Flags: EJ, F, P



ALL DEPICTED PROJECT ALIGNMENTS ARE CONCEPTUAL

Peak Period Traffic Flow:	0.00
Safety - Crash Rate:	0.00
Linkage to Other Plan:	4.00
Local Priority:	1.00
Eliminates Barriers:	10.33
Active Transportation Network Connectivity:	7.22
Addresses Documented Need:	6.56
Access to Jobs:	8.11
Exclusive Path:	4.00
Connection to School:	2.89
Area of Identified Hazard:	2.89
Local Support:	3.78
Scope of Benefit:	3.44
Environmental Linkage:	3.67
Economic Development:	3.44
Multi-Modal Support:	2.78
Security & Resilience:	3.00
Transportation Enhancements & Livability:	3.44
Sustainability:	2.78



Project Name: Belton Hike and Bike Trail Extension SW

MTP Ranking: 13 Total Score: 69.78

Estimated Cost: \$3,252,480

Work Description:
Construct 10' hike/bike trail

Purpose & Needs Statement: This lighted trail will connect with existing paths in Nolan Creek Nature Trail and improve access for communities in southwest Belton. Greenway and trail projects create healthy recreation and transportation opportunities while building community pride.

Project Sponsor: City of Belton

Extents: Confederate Park to Nolan Creek Pedestrian Bridge

Planning and Environmental Linkage Flags: EJ, F, H, P



ALL DEPICTED PROJECT ALIGNMENTS ARE CONCEPTUAL

Peak Period Traffic Flow:	0.00
Safety - Crash Rate:	0.00
Linkage to Other Plan:	4.00
Local Priority:	1.00
Eliminates Barriers:	10.33
Active Transportation Network Connectivity:	6.78
Addresses Documented Need:	6.56
Access to Jobs:	8.56
Exclusive Path:	3.44
Connection to School:	2.67
Area of Identified Hazard:	2.56
Local Support:	3.22
Scope of Benefit:	2.89
Environmental Linkage:	3.33
Economic Development:	3.44
Multi-Modal Support:	2.67
Security & Resilience:	2.67
Transportation Enhancements & Livability:	3.22
Sustainability:	2.44



Project Name: FM 116 Railroad Underpass Sidewalks

MTP Ranking: 4 Total Score: 80.90

Estimated Cost: \$920,000

Work Description:

Construct 10' wide sidewalk in conjunction with the FM 116 underpass project

Purpose & Needs Statement: Construction of a 10' sidewalk in conjunction with project C35-02a (FM 116 railroad underpass) will eliminate the hazards of students, cyclists, and pedestrians crossing the railroad tracks and improve walkability in downtown Copperas Cove.

Project Sponsor: City of Copperas Cove

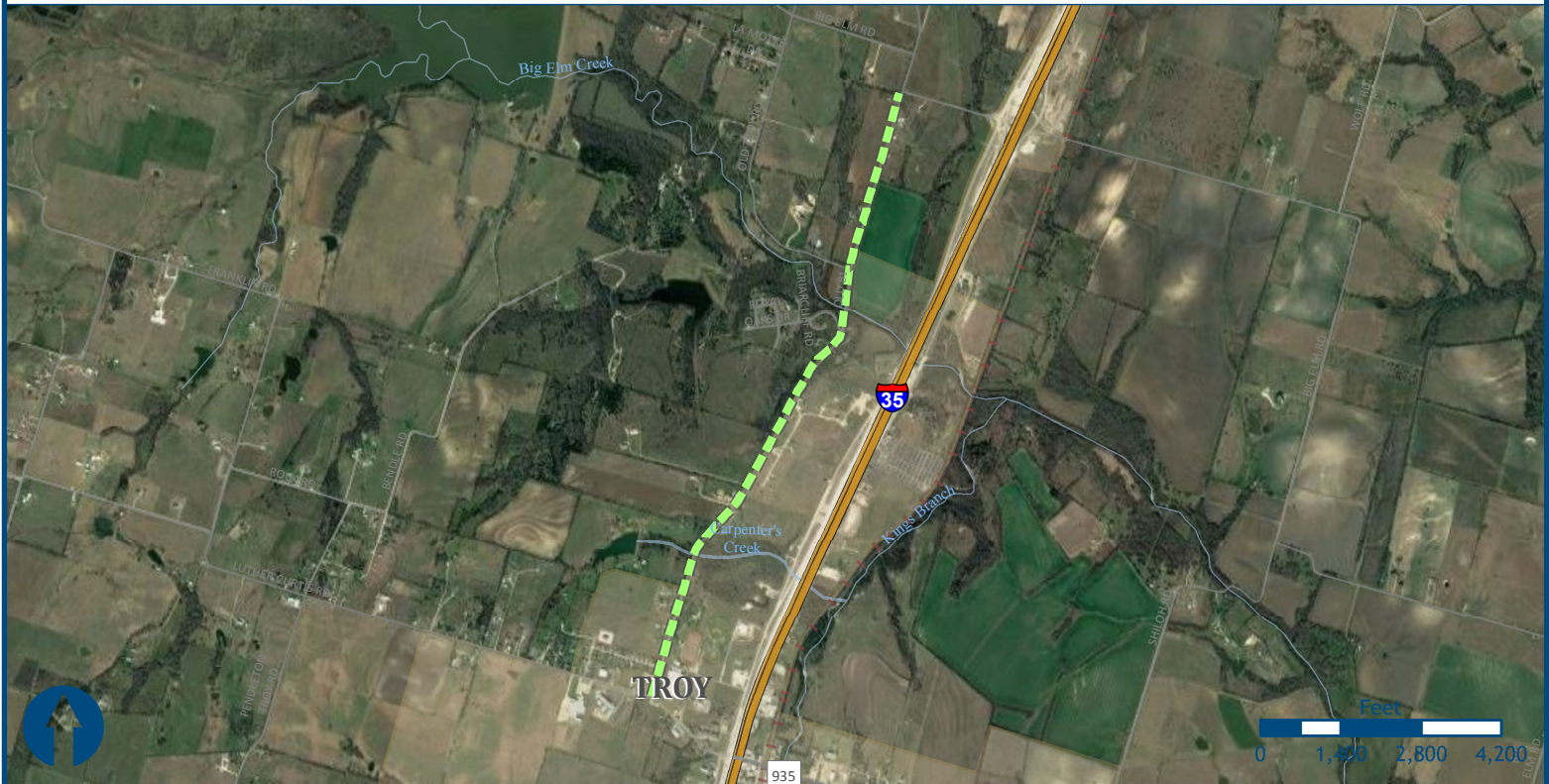
Extents: S. Main (through existing parking facility) to Ave. B

Planning and Environmental Linkage Flags: N/A



ALL DEPICTED PROJECT ALIGNMENTS ARE CONCEPTUAL

Peak Period Traffic Flow:	0.00
Safety - Crash Rate:	0.00
Linkage to Other Plan:	0.00
Local Priority:	1.00
Eliminates Barriers:	13.56
Active Transportation Network Connectivity:	8.11
Addresses Documented Need:	7.78
Access to Jobs:	9.67
Exclusive Path:	3.78
Connection to School:	4.33
Area of Identified Hazard:	4.44
Local Support:	4.00
Scope of Benefit:	3.56
Environmental Linkage:	3.33
Economic Development:	3.89
Multi-Modal Support:	3.89
Security & Resilience:	3.22
Transportation Enhancements & Livability:	3.56
Sustainability:	2.78



Project Name: North Waco Rd. (Old 81) Sidewalk

MTP Ranking: 16 Total Score: 69.22

Estimated Cost: \$1,700,000

Work Description:
Construct 10' wide pedestrian/bicycle facility

Purpose & Needs Statement: This project will allow pedestrians and bicyclists to safely travel adjacent to the roadway in order to access retail areas, local neighborhoods and future residential developments, and the Troy ISD campus and athletic facilities.

Project Sponsor: City of Troy

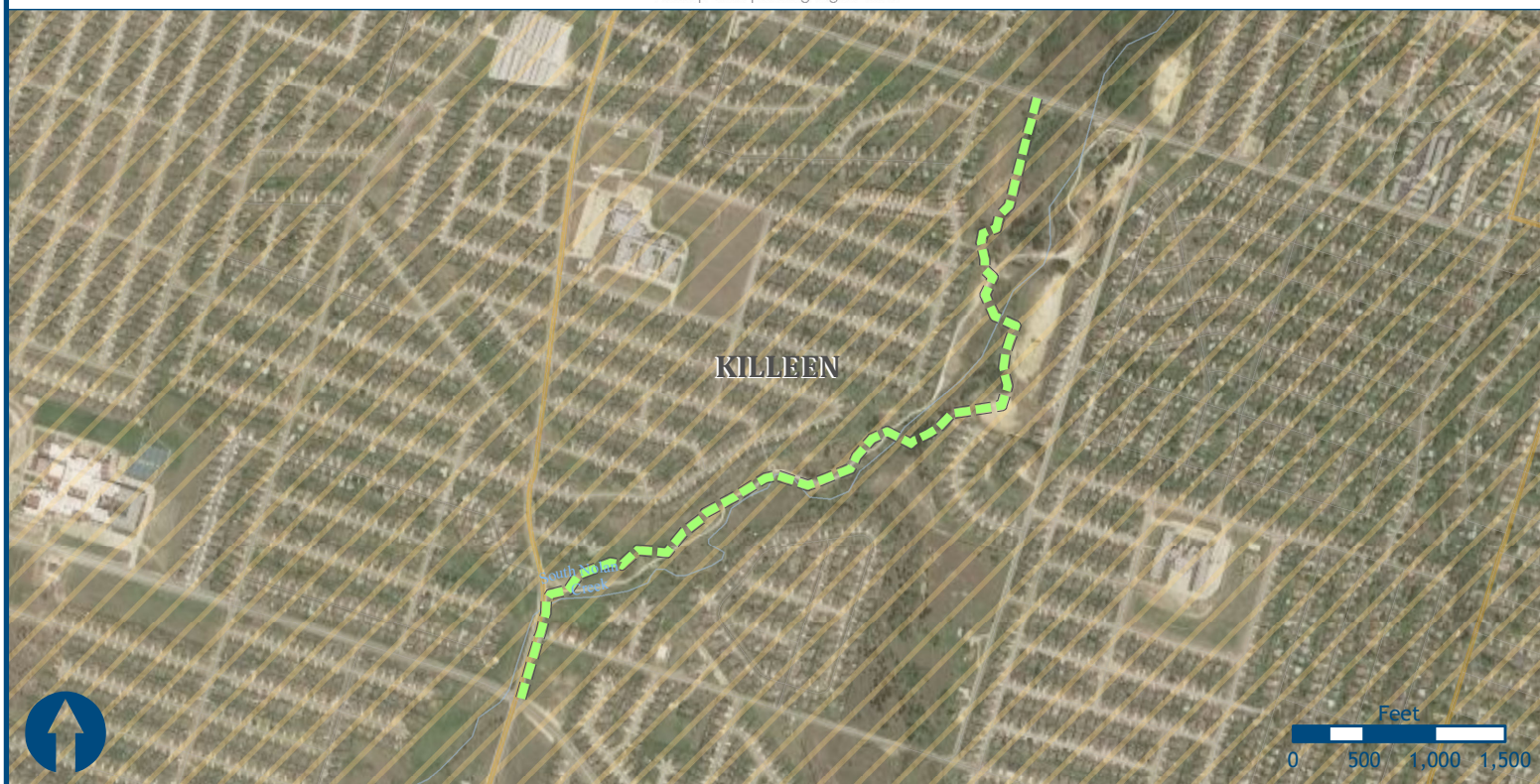
Extents: West Main St to West Big Elm

Planning and Environmental Linkage Flags: N/A



ALL DEPICTED PROJECT ALIGNMENTS ARE CONCEPTUAL

Peak Period Traffic Flow:	3.00
Safety - Crash Rate:	0.00
Linkage to Other Plan:	0.00
Local Priority:	4.00
Eliminates Barriers:	8.44
Active Transportation Network Connectivity:	6.11
Addresses Documented Need:	6.56
Access to Jobs:	7.78
Exclusive Path:	2.44
Connection to School:	2.67
Area of Identified Hazard:	3.22
Local Support:	3.00
Scope of Benefit:	3.44
Environmental Linkage:	3.00
Economic Development:	3.78
Multi-Modal Support:	2.89
Security & Resilience:	3.00
Transportation Enhancements & Livability:	3.33
Sustainability:	2.56



Project Name: Killeen - Fort Hood Regional Trail

MTP Ranking: N/A Total Score: N/A

Estimated Cost: \$1,940,664

Work Description:
Construct Shared-use Path - Segment 3 of Killeen - Fort Hood Regional Trail

Purpose & Needs Statement: Previously funded in 2015-2018 TIP

Project Sponsor: City of Killeen

Extents: Along creek between Elms Rd and Watercrest

Planning and Environmental Linkage Flags: F



ALL DEPICTED PROJECT ALIGNMENTS ARE CONCEPTUAL

Peak Period Traffic Flow:	Unscored
Safety - Crash Rate:	Unscored
Linkage to Other Plan:	Unscored
Local Priority:	Unscored
Eliminates Barriers:	Unscored
Active Transportation Network Connectivity:	Unscored
Addresses Documented Need:	Unscored
Access to Jobs:	Unscored
Exclusive Path:	Unscored
Connection to School:	Unscored
Area of Identified Hazard:	Unscored
Local Support:	Unscored
Scope of Benefit:	Unscored
Environmental Linkage:	Unscored
Economic Development:	Unscored
Multi-Modal Support:	Unscored
Security & Resilience:	Unscored
Transportation Enhancements & Livability:	Unscored
Sustainability:	Unscored



Project Name: Heritage Oaks Hike and Bike Trail, Segment 4

MTP Ranking: N/A Total Score: N/A

Estimated Cost: \$3,448,284

Work Description:
Construct shared use path for pedestrians and bicyclists

Purpose & Needs Statement: Previously funded in 2017-2020 TIP

Project Sponsor: City of Killeen

Extents: Platinum Drive to Chaparral Road

Planning and Environmental Linkage Flags: F



ALL DEPICTED PROJECT ALIGNMENTS ARE CONCEPTUAL

Peak Period Traffic Flow:	Unscored
Safety - Crash Rate:	Unscored
Linkage to Other Plan:	Unscored
Local Priority:	Unscored
Eliminates Barriers:	Unscored
Active Transportation Network Connectivity:	Unscored
Addresses Documented Need:	Unscored
Access to Jobs:	Unscored
Exclusive Path:	Unscored
Connection to School:	Unscored
Area of Identified Hazard:	Unscored
Local Support:	Unscored
Scope of Benefit:	Unscored
Environmental Linkage:	Unscored
Economic Development:	Unscored
Multi-Modal Support:	Unscored
Security & Resilience:	Unscored
Transportation Enhancements & Livability:	Unscored
Sustainability:	Unscored



Project Name: Heritage Oaks Hike and Bike Trail, Segment 5

MTP Ranking: 6 Total Score: 75.99

Estimated Cost: \$1,300,000

Work Description:
Construct shared use path for pedestrians and bicyclists

Purpose & Needs Statement: The proposed 6.8 mile Heritage Oaks Hike and Bike Trail will provide improved access and more transportation choices for residents. Segment 4 (1.5 miles) will connect a future KISD elementary school to US Army Corps of Engineer land to the south.

Project Sponsor: City of Killeen

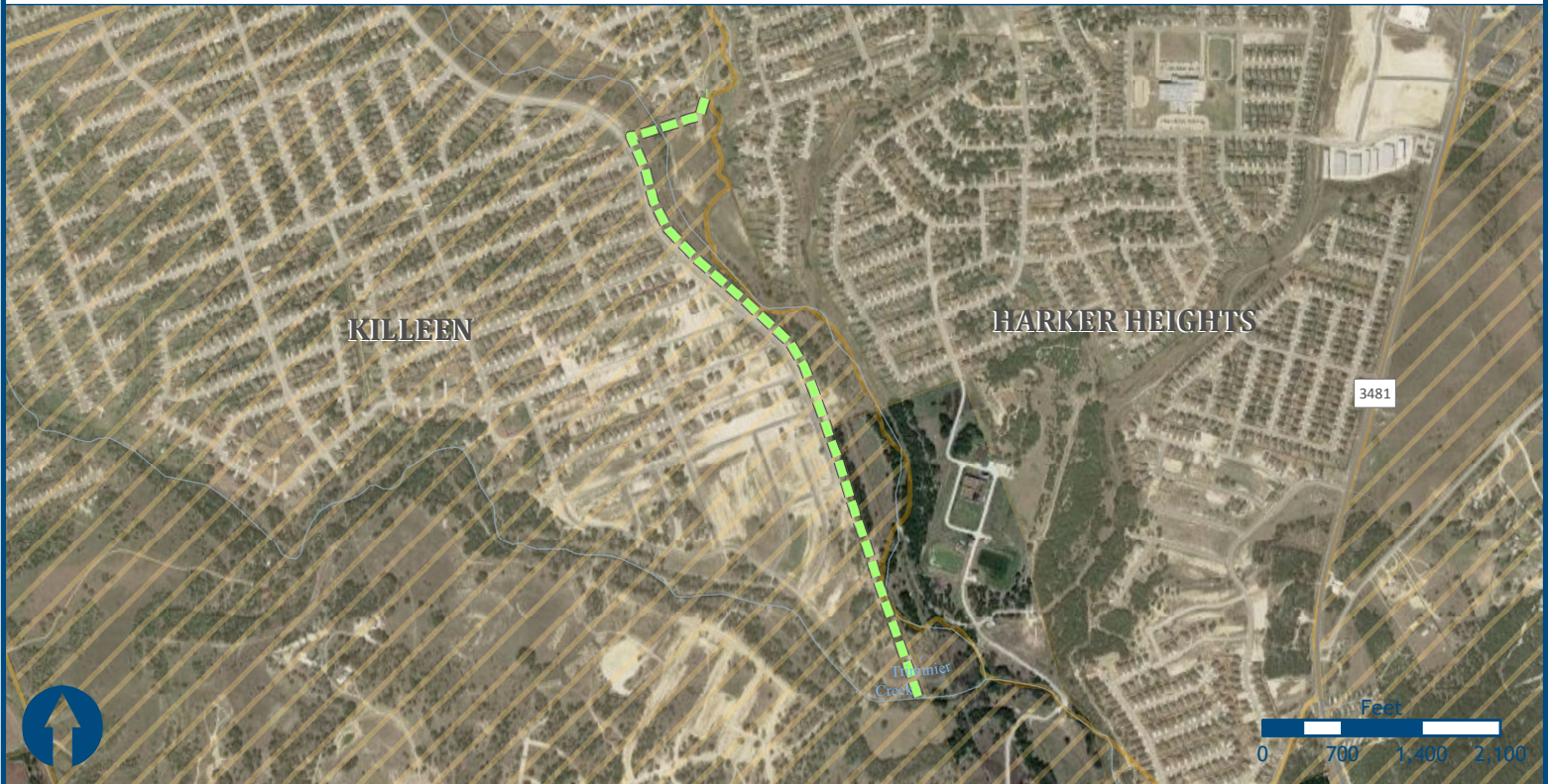
Extents: Chaparral Rd @ Rosewood to USACE Property

Planning and Environmental Linkage Flags: ARZ, EJ, F



ALL DEPICTED PROJECT ALIGNMENTS ARE CONCEPTUAL

Peak Period Traffic Flow:	0.00
Safety - Crash Rate:	0.00
Linkage to Other Plan:	11.00
Local Priority:	1.00
Eliminates Barriers:	9.44
Active Transportation Network Connectivity:	6.33
Addresses Documented Need:	6.67
Access to Jobs:	7.11
Exclusive Path:	3.44
Connection to School:	3.33
Area of Identified Hazard:	2.56
Local Support:	3.78
Scope of Benefit:	3.33
Environmental Linkage:	3.22
Economic Development:	3.56
Multi-Modal Support:	2.78
Security & Resilience:	2.67
Transportation Enhancements & Livability:	3.33
Sustainability:	2.44



Project Name: Heritage Oaks Hike and Bike Trail, Segment 3A

MTP Ranking: N/A Total Score: N/A

Estimated Cost: \$800,000

Work Description:
Construction of a shared use Ped/Bike Path

Purpose & Needs Statement: Previously funded in 2017-2020 TIP

Project Sponsor: City of Killeen

Extents: Nickelback Dr to Pyrite Dr

Planning and Environmental Linkage Flags: F



ALL DEPICTED PROJECT ALIGNMENTS ARE CONCEPTUAL

Peak Period Traffic Flow:	Unscored
Safety - Crash Rate:	Unscored
Linkage to Other Plan:	Unscored
Local Priority:	Unscored
Eliminates Barriers:	Unscored
Active Transportation Network Connectivity:	Unscored
Addresses Documented Need:	Unscored
Access to Jobs:	Unscored
Exclusive Path:	Unscored
Connection to School:	Unscored
Area of Identified Hazard:	Unscored
Local Support:	Unscored
Scope of Benefit:	Unscored
Environmental Linkage:	Unscored
Economic Development:	Unscored
Multi-Modal Support:	Unscored
Security & Resilience:	Unscored
Transportation Enhancements & Livability:	Unscored
Sustainability:	Unscored

**Project Name: Main Street Connectivity**

MTP Ranking: N/A Total Score: N/A

Estimated Cost: \$596,386

Work Description:

Construct ADA bicycle/pedestrian pathways along Main Street and under US190 to connect downtown with

Purpose & Needs Statement: Previously funded in 2017-2020 TIP

Project Sponsor: City of Nolanville

Extents: Avenue I to US190 Eastbound Frontage Road

Planning and Environmental Linkage Flags: N/A



ALL DEPICTED PROJECT ALIGNMENTS ARE CONCEPTUAL

Peak Period Traffic Flow:	Unscored
Safety - Crash Rate:	Unscored
Linkage to Other Plan:	Unscored
Local Priority:	Unscored
Eliminates Barriers:	Unscored
Active Transportation Network Connectivity:	Unscored
Addresses Documented Need:	Unscored
Access to Jobs:	Unscored
Exclusive Path:	Unscored
Connection to School:	Unscored
Area of Identified Hazard:	Unscored
Local Support:	Unscored
Scope of Benefit:	Unscored
Environmental Linkage:	Unscored
Economic Development:	Unscored
Multi-Modal Support:	Unscored
Security & Resilience:	Unscored
Transportation Enhancements & Livability:	Unscored
Sustainability:	Unscored



Project Name: Nolanville Elementary Sidewalk

MTP Ranking: N/A Total Score: N/A

Estimated Cost: \$601,587

Work Description:
Construct Shared-Use Path near school for Pedestrians and Bicyclists.

Purpose & Needs Statement: Previously funded in 2017-2020 TIP

Project Sponsor: City of Nolanville

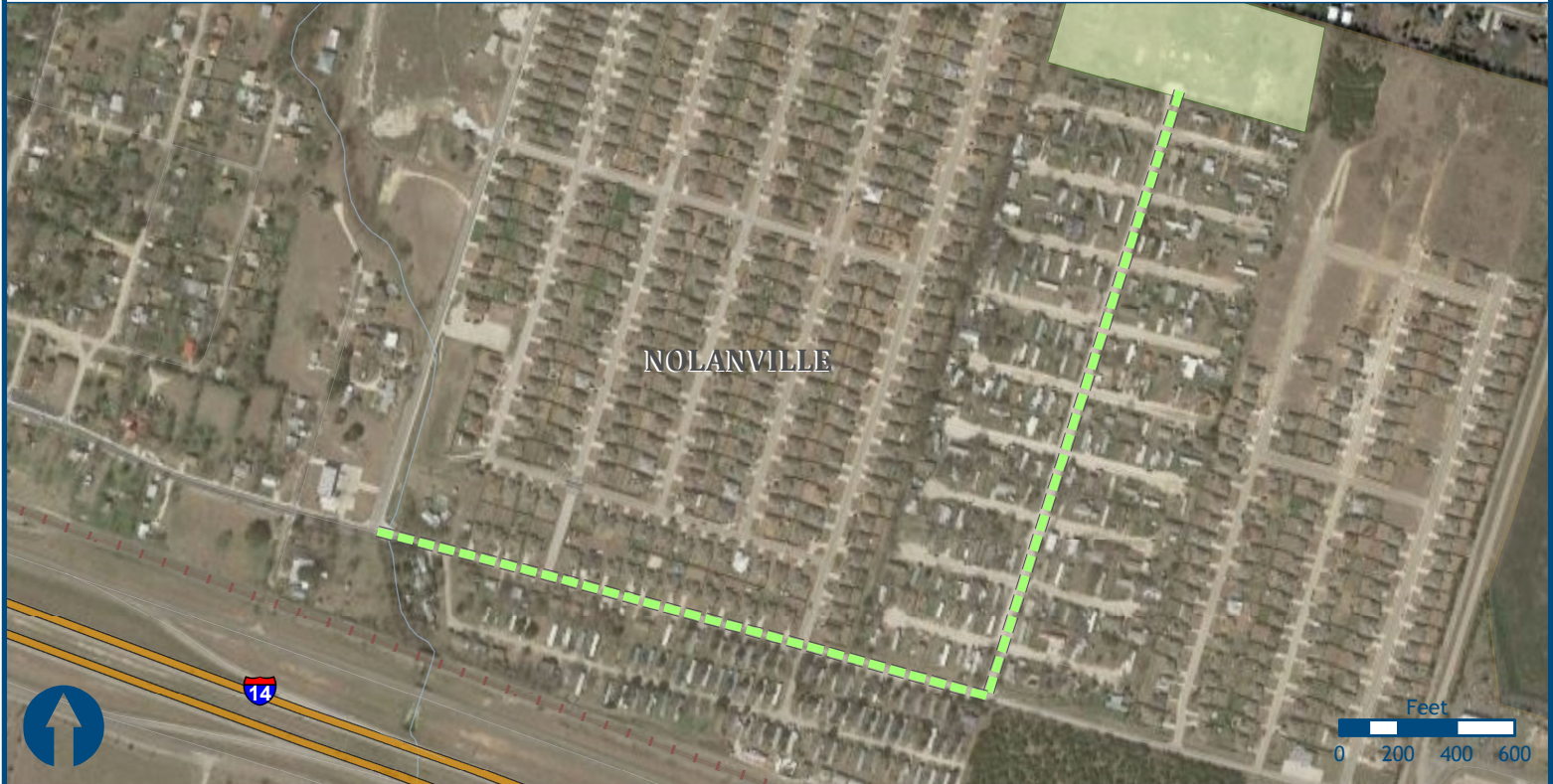
Extents: Old Nolanville Rd from Warriors Path to north of Bluebonnet

Planning and Environmental Linkage Flags: N/A



ALL DEPICTED PROJECT ALIGNMENTS ARE CONCEPTUAL

Peak Period Traffic Flow:	Unscored
Safety - Crash Rate:	Unscored
Linkage to Other Plan:	Unscored
Local Priority:	Unscored
Eliminates Barriers:	Unscored
Active Transportation Network Connectivity:	Unscored
Addresses Documented Need:	Unscored
Access to Jobs:	Unscored
Exclusive Path:	Unscored
Connection to School:	Unscored
Area of Identified Hazard:	Unscored
Local Support:	Unscored
Scope of Benefit:	Unscored
Environmental Linkage:	Unscored
Economic Development:	Unscored
Multi-Modal Support:	Unscored
Security & Resilience:	Unscored
Transportation Enhancements & Livability:	Unscored
Sustainability:	Unscored



Project Name: City Park Connectivity

MTP Ranking: 14 Total Score: 69.75

Estimated Cost: \$1,558,802

Work Description:

Construct 10' wide sidewalk, ADA ramps and crosswalks; widen pavement by 32" with curb and gutter

Purpose & Needs Statement: The project resolves connectivity gaps between neighborhoods, parks, school and city services and eliminates exclusive path issues. Connection will encourage land use patterns that promote shorter trip lengths easily accomplished by walking and biking.

Project Sponsor: City of Nolanville

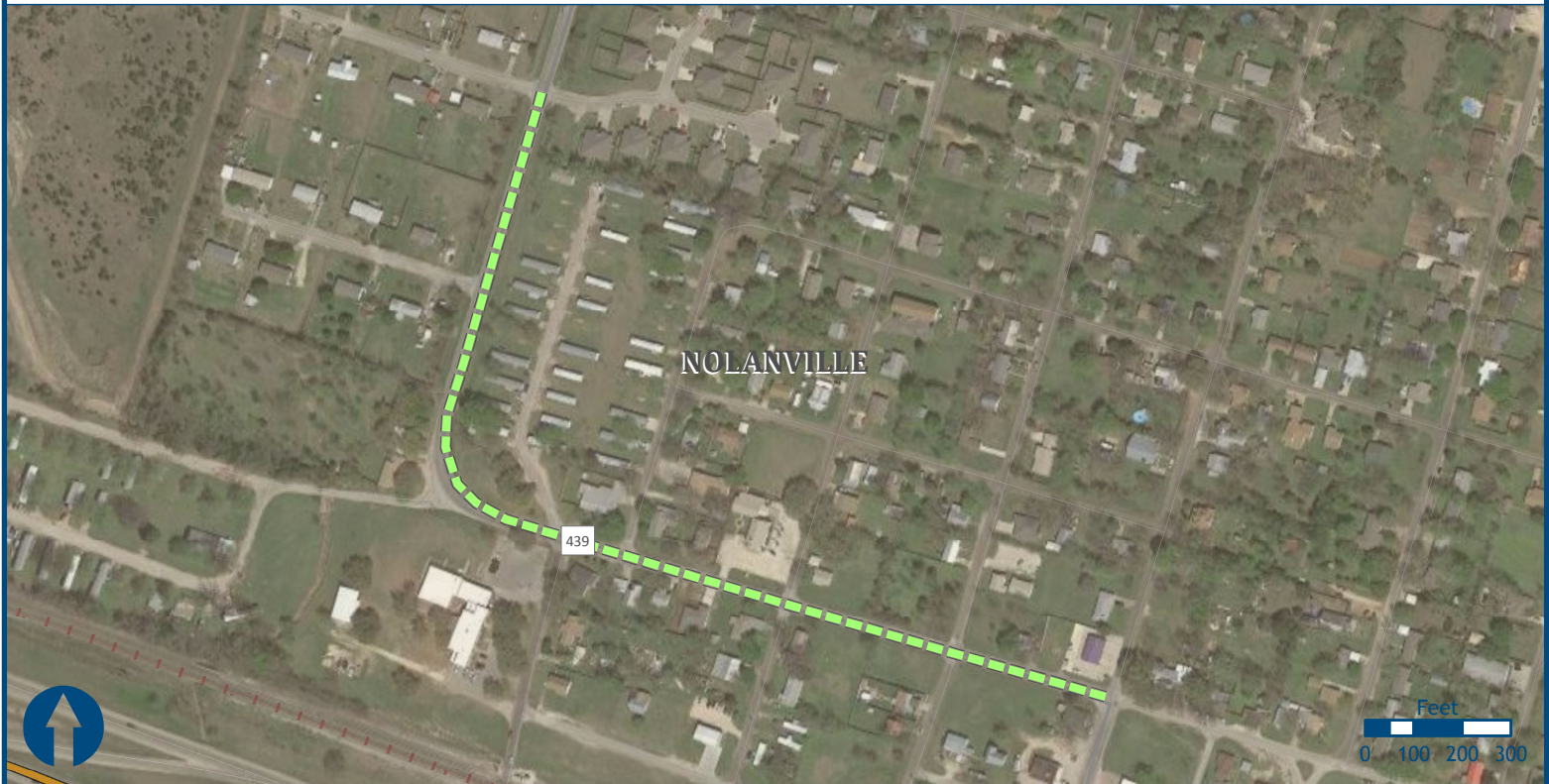
Extents: City Park along Mesquite St. and Ave H to 10th St.

Planning and Environmental Linkage Flags: F, P



ALL DEPICTED PROJECT ALIGNMENTS ARE CONCEPTUAL

Peak Period Traffic Flow:	0.00
Safety - Crash Rate:	0.00
Linkage to Other Plan:	4.00
Local Priority:	4.00
Eliminates Barriers:	9.89
Active Transportation Network Connectivity:	6.44
Addresses Documented Need:	6.33
Access to Jobs:	6.44
Exclusive Path:	3.33
Connection to School:	3.00
Area of Identified Hazard:	2.89
Local Support:	3.00
Scope of Benefit:	3.00
Environmental Linkage:	3.11
Economic Development:	3.67
Multi-Modal Support:	2.44
Security & Resilience:	2.33
Transportation Enhancements & Livability:	3.44
Sustainability:	2.44



Project Name: FM 439 Spur Connectivity

MTP Ranking: 15 Total Score: 69.55

Estimated Cost: \$593,230

Work Description:

Construct 10' wide sidewalk, ADA ramps and crosswalks, improve shoulders at Main St.

Purpose & Needs Statement: This Minor Arterial lacks striping, curbs, shoulders or sidewalks. Adding these features will allow pedestrians and cyclists to feel safe while traveling on Main Street by providing a buffer from heavy truck traffic passing through Nolanville.

Project Sponsor: City of Nolanville

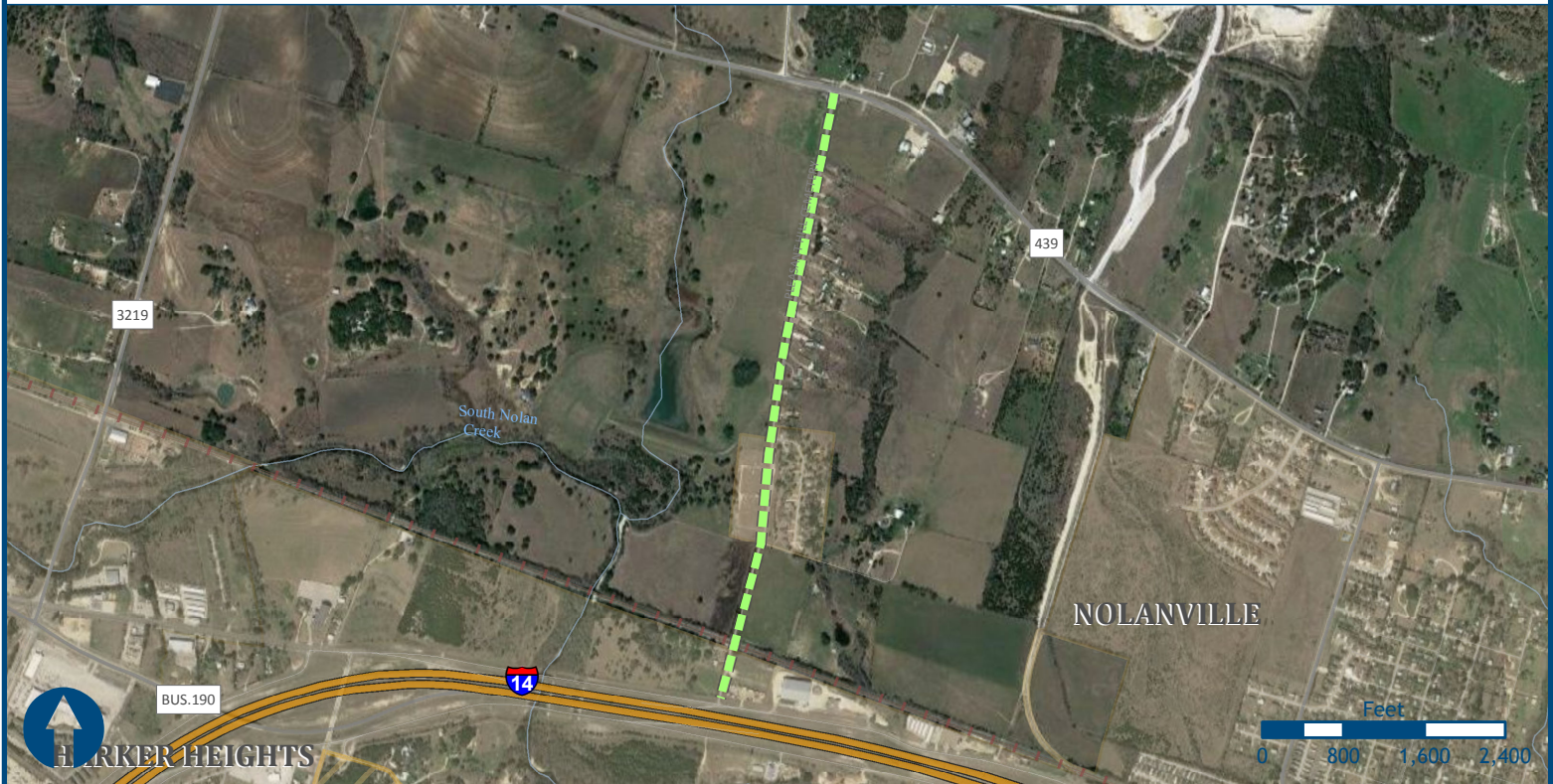
Extents: Main Street to North Drive

Planning and Environmental Linkage Flags: N/A



ALL DEPICTED PROJECT ALIGNMENTS ARE CONCEPTUAL

Peak Period Traffic Flow:	0.00
Safety - Crash Rate:	0.00
Linkage to Other Plan:	4.00
Local Priority:	3.00
Eliminates Barriers:	9.56
Active Transportation Network Connectivity:	6.89
Addresses Documented Need:	6.33
Access to Jobs:	8.00
Exclusive Path:	3.33
Connection to School:	1.33
Area of Identified Hazard:	3.00
Local Support:	3.00
Scope of Benefit:	3.00
Environmental Linkage:	2.89
Economic Development:	4.00
Multi-Modal Support:	3.00
Security & Resilience:	2.56
Transportation Enhancements & Livability:	3.22
Sustainability:	2.44



Project Name: Pleasant Hill Road Bicycle Ln

MTP Ranking: N/A Total Score: N/A

Estimated Cost: \$500,000

Work Description:
Construct buffered on-street bike lane

Purpose & Needs Statement: An on-street bike lane, separated by painted buffers on the ground, will support a higher riding speed and more easily accommodate cyclists with varying experience levels. This project closes gaps and links to Harker Heights for regional benefit.

Project Sponsor: City of Nolanville

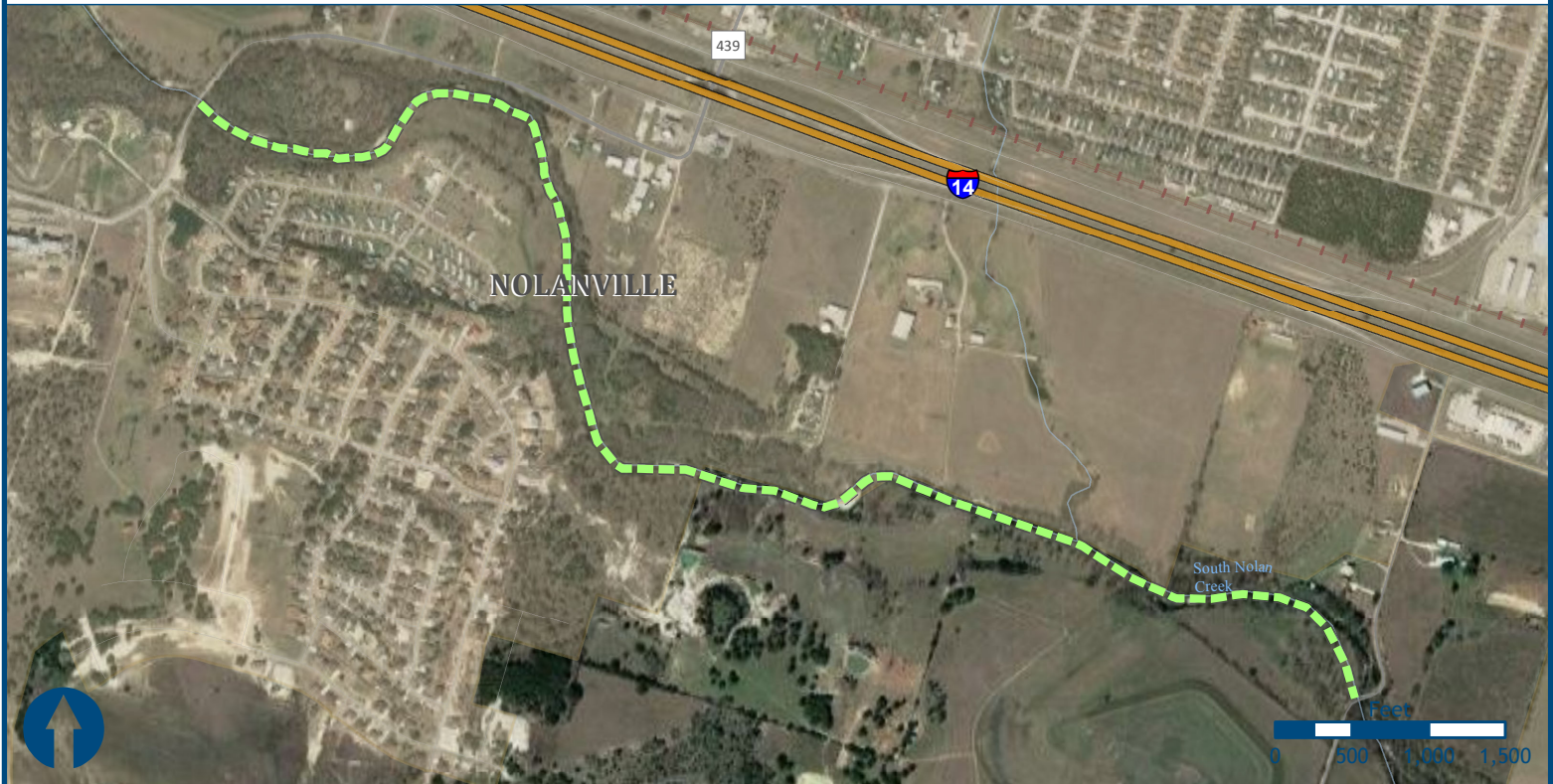
Extents: Lonsesome Oak Drive to Avenue I

Planning and Environmental Linkage Flags: F, H



ALL DEPICTED PROJECT ALIGNMENTS ARE CONCEPTUAL

Peak Period Traffic Flow:	Unscored
Safety - Crash Rate:	Unscored
Linkage to Other Plan:	Unscored
Local Priority:	Unscored
Eliminates Barriers:	Unscored
Active Transportation Network Connectivity:	Unscored
Addresses Documented Need:	Unscored
Access to Jobs:	Unscored
Exclusive Path:	Unscored
Connection to School:	Unscored
Area of Identified Hazard:	Unscored
Local Support:	Unscored
Scope of Benefit:	Unscored
Environmental Linkage:	Unscored
Economic Development:	Unscored
Multi-Modal Support:	Unscored
Security & Resilience:	Unscored
Transportation Enhancements & Livability:	Unscored
Sustainability:	Unscored



Project Name: Nolan Creek Off-System Trail

MTP Ranking: N/A Total Score: N/A

Estimated Cost:

Work Description:

Construct 10' multi-use bordering Nolan Creek

Purpose & Needs Statement: Multi-use trail is planned for a regional recreational connection.

Project Sponsor: City of Nolanville

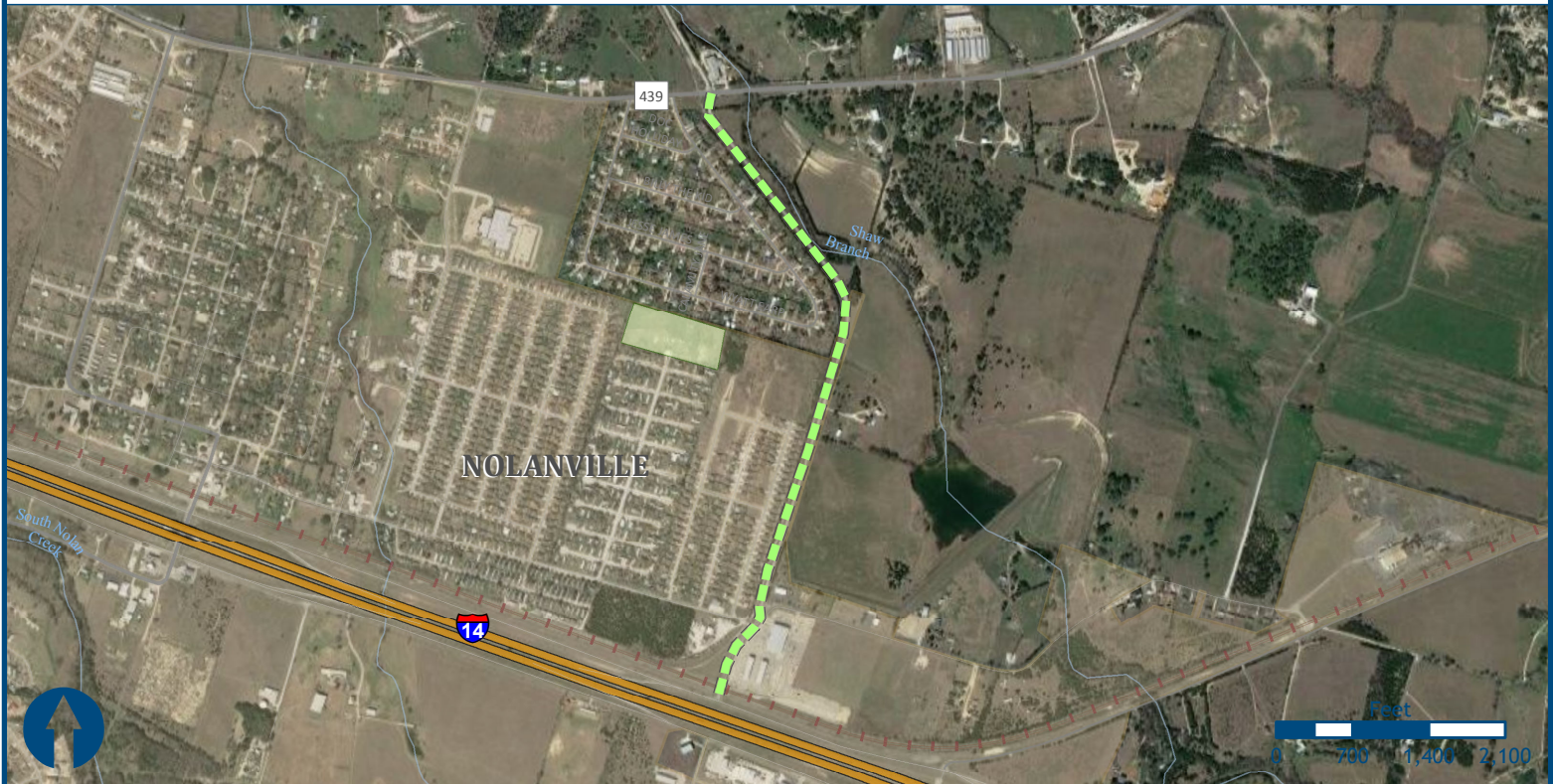
Extents: Bridge on Old Nolanville Rd to Levy Corssing

Planning and Environmental Linkage Flags: F, H



ALL DEPICTED PROJECT ALIGNMENTS ARE CONCEPTUAL

Peak Period Traffic Flow:	Unscored
Safety - Crash Rate:	Unscored
Linkage to Other Plan:	Unscored
Local Priority:	Unscored
Eliminates Barriers:	Unscored
Active Transportation Network Connectivity:	Unscored
Addresses Documented Need:	Unscored
Access to Jobs:	Unscored
Exclusive Path:	Unscored
Connection to School:	Unscored
Area of Identified Hazard:	Unscored
Local Support:	Unscored
Scope of Benefit:	Unscored
Environmental Linkage:	Unscored
Economic Development:	Unscored
Multi-Modal Support:	Unscored
Security & Resilience:	Unscored
Transportation Enhancements & Livability:	Unscored
Sustainability:	Unscored



Project Name: Nolanville Jack Rabbit Road Bike Thoroughfare

MTP Ranking: N/A Total Score: N/A

Estimated Cost:

Work Description:

Construct On-system Bike Lanes

Purpose & Needs Statement: Adding Bike Lanes in order to link to Multi Use Trail through the Park and eventually to Richard E. Cavazos Elementary School.

Project Sponsor: City of Nolanville

Extents: US 190 to FM 439 and through Park to School

Planning and Environmental Linkage Flags: N/A



ALL DEPICTED PROJECT ALIGNMENTS ARE CONCEPTUAL

Peak Period Traffic Flow:	Unscored
Safety - Crash Rate:	Unscored
Linkage to Other Plan:	Unscored
Local Priority:	Unscored
Eliminates Barriers:	Unscored
Active Transportation Network Connectivity:	Unscored
Addresses Documented Need:	Unscored
Access to Jobs:	Unscored
Exclusive Path:	Unscored
Connection to School:	Unscored
Area of Identified Hazard:	Unscored
Local Support:	Unscored
Scope of Benefit:	Unscored
Environmental Linkage:	Unscored
Economic Development:	Unscored
Multi-Modal Support:	Unscored
Security & Resilience:	Unscored
Transportation Enhancements & Livability:	Unscored
Sustainability:	Unscored



Project Name: Wild Wood Trail

MTP Ranking: N/A Total Score: N/A

Estimated Cost: \$400,000

Work Description:
Construct 8' Multi-use Trail

Purpose & Needs Statement: Off-system Multi-use trail will provide safe access to Main Street leading from Nature Observation Area in Wild Wood Estates, connecting to Avenue I behind the City Hall. Will link to Harker Heights sidewalks for regional benefit.

Project Sponsor: City of Nolanville

Extents: Lonsesome Oak Drive to Avenue I

Planning and Environmental Linkage Flags: N/A



ALL DEPICTED PROJECT ALIGNMENTS ARE CONCEPTUAL

Peak Period Traffic Flow:	Unscored
Safety - Crash Rate:	Unscored
Linkage to Other Plan:	Unscored
Local Priority:	Unscored
Eliminates Barriers:	Unscored
Active Transportation Network Connectivity:	Unscored
Addresses Documented Need:	Unscored
Access to Jobs:	Unscored
Exclusive Path:	Unscored
Connection to School:	Unscored
Area of Identified Hazard:	Unscored
Local Support:	Unscored
Scope of Benefit:	Unscored
Environmental Linkage:	Unscored
Economic Development:	Unscored
Multi-Modal Support:	Unscored
Security & Resilience:	Unscored
Transportation Enhancements & Livability:	Unscored
Sustainability:	Unscored

**Project Name: Salado Creek SUP**

MTP Ranking: N/A Total Score: N/A

Estimated Cost: \$367,900

Work Description:
Construct Shared-Use Path for Pedestrians and Bicyclists.
This project has been postponed to allow further

Purpose & Needs Statement: This trail will increase accessibility to neighborhoods, businesses, Main Street, historic sites and Salado Creek. The off-street path adds “character and charm”, maximizes bike/pedestrian safety and enhances quality of life for residents and visitors.

Project Sponsor: Village of Salado

Extents: Trail alignment as shown may be re-designed

Planning and Environmental Linkage Flags: F



ALL DEPICTED PROJECT ALIGNMENTS ARE CONCEPTUAL

Peak Period Traffic Flow:	Unscored
Safety - Crash Rate:	Unscored
Linkage to Other Plan:	Unscored
Local Priority:	Unscored
Eliminates Barriers:	Unscored
Active Transportation Network Connectivity:	Unscored
Addresses Documented Need:	Unscored
Access to Jobs:	Unscored
Exclusive Path:	Unscored
Connection to School:	Unscored
Area of Identified Hazard:	Unscored
Local Support:	Unscored
Scope of Benefit:	Unscored
Environmental Linkage:	Unscored
Economic Development:	Unscored
Multi-Modal Support:	Unscored
Security & Resilience:	Unscored
Transportation Enhancements & Livability:	Unscored
Sustainability:	Unscored



Project Name: Salado Creek/Pace Park Off-Road Trail

MTP Ranking: 19 Total Score: 60.19

Estimated Cost: \$199,965

Work Description:

Construct 10' wide concrete trail, ped/bike crossing, stabilization, trail heads, benches, bike rack, trash can,

Purpose & Needs Statement: This trail will increase accessibility to neighborhoods, businesses, Main Street, Pace Park and Salado Creek. The off-street path adds "character and charm", maximizes bike/pedestrian safety and enhances quality of life for residents and visitors.

Project Sponsor: Village of Salado

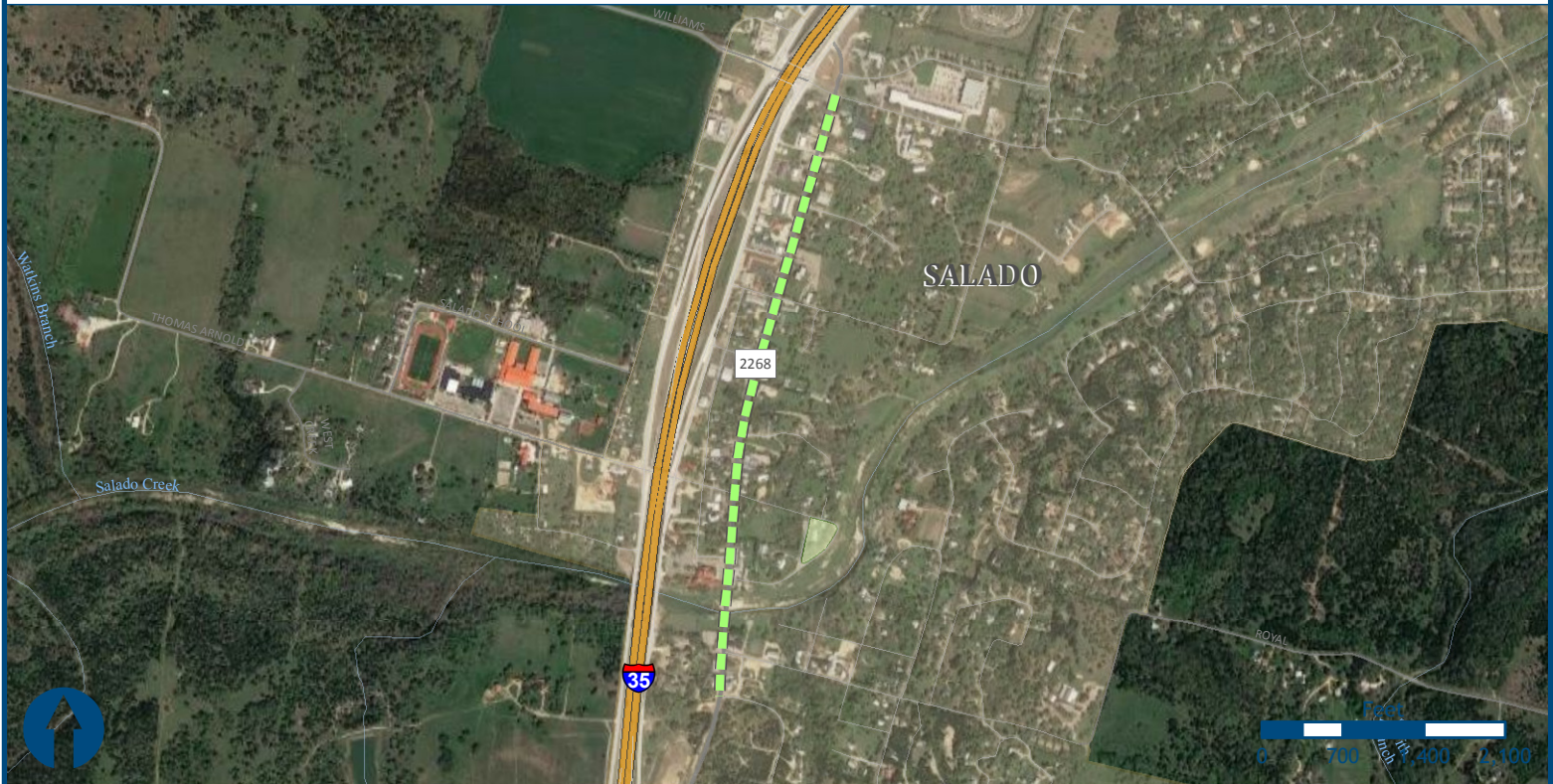
Extents: Pace Park along Pace Park Road

Planning and Environmental Linkage Flags: ARZ, F, P



ALL DEPICTED PROJECT ALIGNMENTS ARE CONCEPTUAL

Peak Period Traffic Flow:	0.00
Safety - Crash Rate:	0.00
Linkage to Other Plan:	4.00
Local Priority:	4.00
Eliminates Barriers:	7.89
Active Transportation Network Connectivity:	5.22
Addresses Documented Need:	5.44
Access to Jobs:	5.11
Exclusive Path:	3.33
Connection to School:	1.22
Area of Identified Hazard:	2.33
Local Support:	3.11
Scope of Benefit:	2.67
Environmental Linkage:	2.44
Economic Development:	3.44
Multi-Modal Support:	2.44
Security & Resilience:	2.11
Transportation Enhancements & Livability:	3.11
Sustainability:	2.33



Project Name: FM 2268 (Main St)

MTP Ranking: 3 Total Score: 81.01

Estimated Cost: \$1,616,956

Work Description:
Construct sidewalks, lighting and striping for bicycles

Purpose & Needs Statement: This project will enhance safety by moving pedestrians and cyclists off of Main Street and diminishing the likelihood of car/bike/pedestrian accidents. Increasing quality of life and drawing tourism may support economic development and future growth.

Project Sponsor: Village of Salado

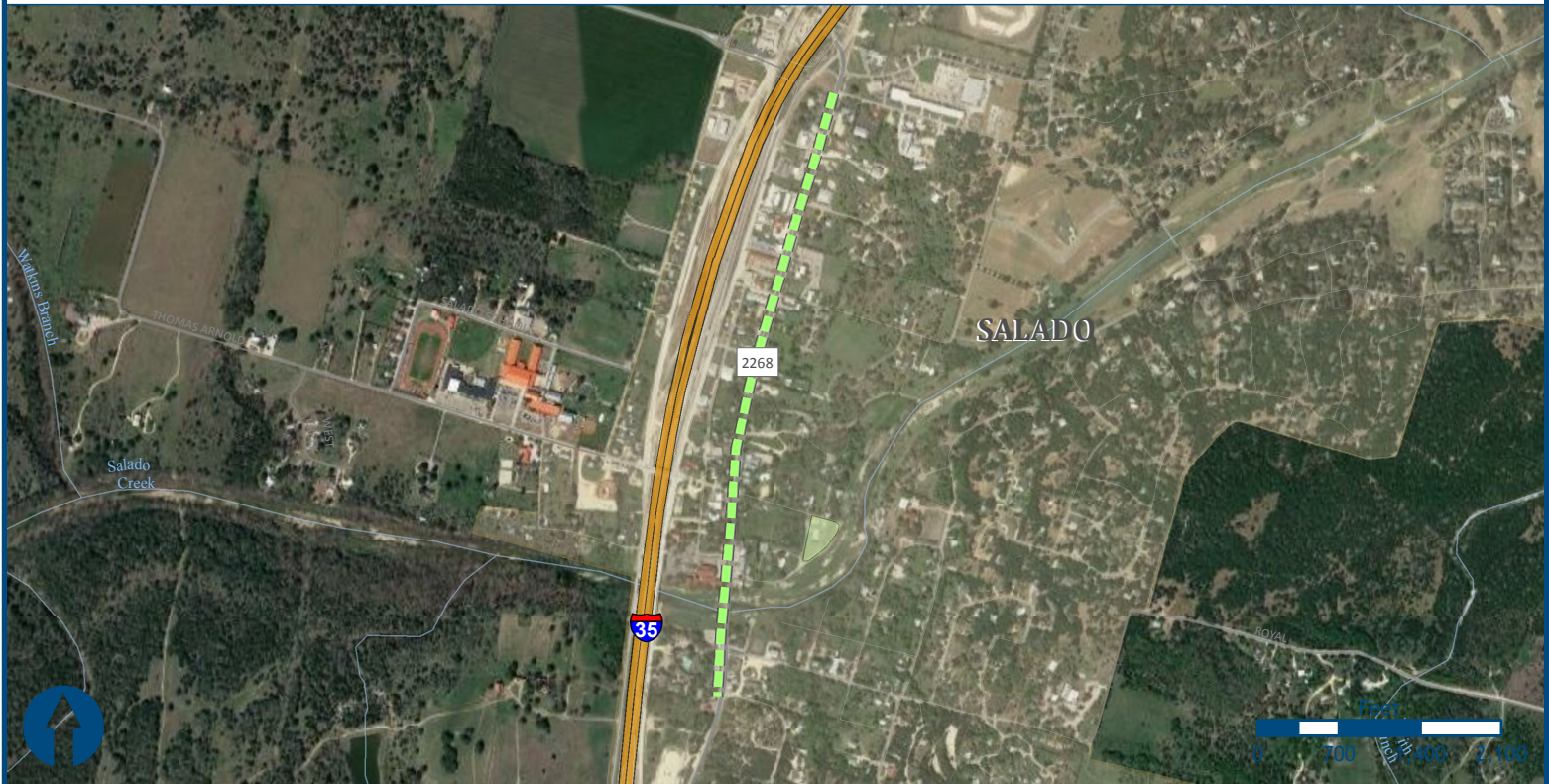
Extents: Salado Plaza Drive to College Hill Dr (North End)

Planning and Environmental Linkage Flags: ARZ, F, H



ALL DEPICTED PROJECT ALIGNMENTS ARE CONCEPTUAL

Peak Period Traffic Flow:	0.00
Safety - Crash Rate:	0.00
Linkage to Other Plan:	12.00
Local Priority:	1.00
Eliminates Barriers:	10.33
Active Transportation Network Connectivity:	6.56
Addresses Documented Need:	6.22
Access to Jobs:	9.44
Exclusive Path:	3.33
Connection to School:	1.67
Area of Identified Hazard:	3.78
Local Support:	3.78
Scope of Benefit:	3.22
Environmental Linkage:	3.00
Economic Development:	3.67
Multi-Modal Support:	4.22
Security & Resilience:	2.67
Transportation Enhancements & Livability:	3.56
Sustainability:	2.56

**Project Name: Main St Sidewalks Phase****2**

MTP Ranking: N/A Total Score: N/A

Estimated Cost: \$2,223,044

Work Description:

Main St improvements to include pavement widening, bike paths, drainage improvements

Purpose & Needs Statement: This project will enhance safety by moving pedestrians and cyclists off of Main Street and diminishing the likelihood of car/bike/pedestrian accidents. Increasing quality of life and drawing tourism may support economic development and future growth.

Project Sponsor: Village of Salado

Extents: College Hill Dr to Salado Plaza Dr

Planning and Environmental Linkage Flags: ARZ, F, H



ALL DEPICTED PROJECT ALIGNMENTS ARE CONCEPTUAL

Peak Period Traffic Flow:	Unscored
Safety - Crash Rate:	Unscored
Linkage to Other Plan:	Unscored
Local Priority:	Unscored
Eliminates Barriers:	Unscored
Active Transportation Network Connectivity:	Unscored
Addresses Documented Need:	Unscored
Access to Jobs:	Unscored
Exclusive Path:	Unscored
Connection to School:	Unscored
Area of Identified Hazard:	Unscored
Local Support:	Unscored
Scope of Benefit:	Unscored
Environmental Linkage:	Unscored
Economic Development:	Unscored
Multi-Modal Support:	Unscored
Security & Resilience:	Unscored
Transportation Enhancements & Livability:	Unscored
Sustainability:	Unscored

**Project Name: FM 2271**

MTP Ranking: 18 Total Score: 67.79

Estimated Cost: \$950,000

Work Description:
Construct 8' hike/bike trail

Purpose & Needs Statement: The FM 2271 Trail would provide an exclusive path along a heavily traveled road that currently does not have any pedestrian provisions. The project would improve regional connectivity between Belton and Temple.

Project Sponsor: City of Temple

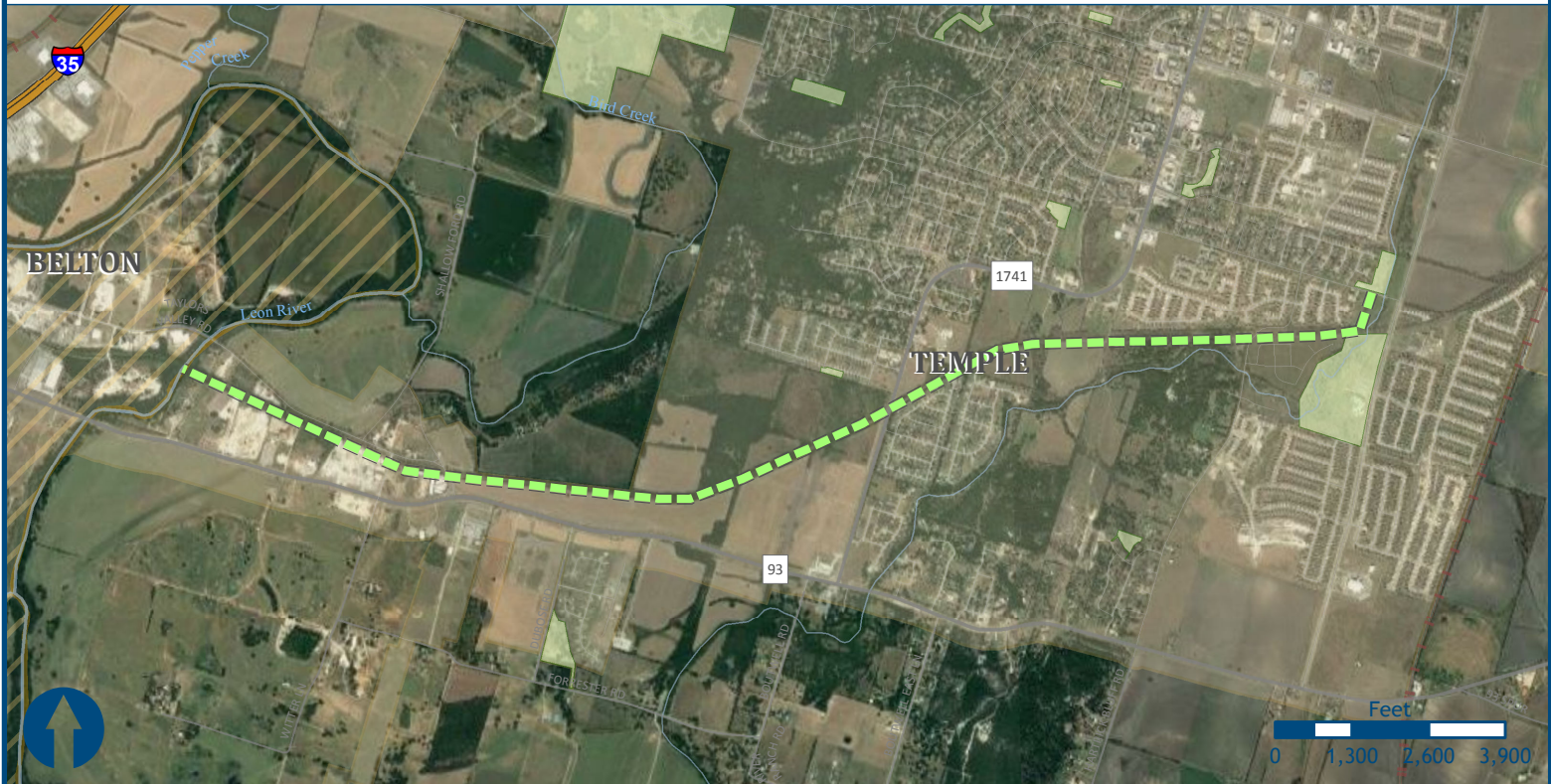
Extents: FM 2305 to Miller Springs Park

Planning and Environmental Linkage Flags: H, P



ALL DEPICTED PROJECT ALIGNMENTS ARE CONCEPTUAL

Peak Period Traffic Flow:	0.00
Safety - Crash Rate:	0.00
Linkage to Other Plan:	5.00
Local Priority:	1.00
Eliminates Barriers:	8.00
Active Transportation Network Connectivity:	6.56
Addresses Documented Need:	6.00
Access to Jobs:	7.67
Exclusive Path:	3.56
Connection to School:	1.89
Area of Identified Hazard:	2.67
Local Support:	3.44
Scope of Benefit:	3.00
Environmental Linkage:	3.22
Economic Development:	4.22
Multi-Modal Support:	2.89
Security & Resilience:	2.56
Transportation Enhancements & Livability:	3.67
Sustainability:	2.44



Project Name: Georgetown RR Trail

MTP Ranking: 10 Total Score: 70.68

Estimated Cost: \$2,000,000

Work Description:

Construct 10 foot wide hike/bike trail

Purpose & Needs Statement: This rail-to-trail project will provide a direct connection between nearby neighborhoods and a school, a regional park and a water park, as well as mixed-use development and light industrial jobs. The trail may also connect to the future Leon River Trail.

Project Sponsor: City of Temple

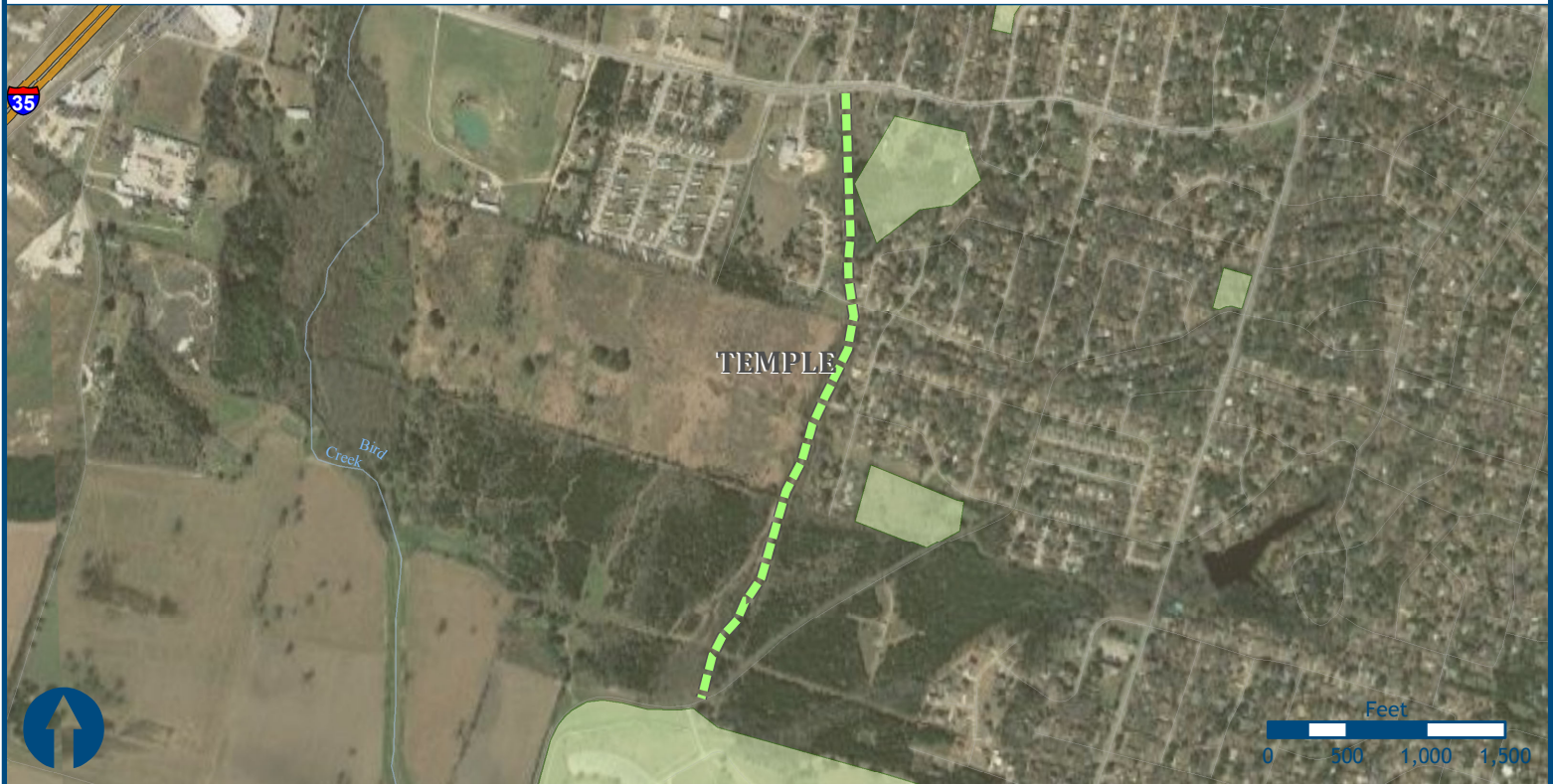
Extents: S. 5th Street to Leon River (Belton City Limits)

Planning and Environmental Linkage Flags: EJ, F, H, P



ALL DEPICTED PROJECT ALIGNMENTS ARE CONCEPTUAL

Peak Period Traffic Flow:	0.00
Safety - Crash Rate:	0.00
Linkage to Other Plan:	1.00
Local Priority:	1.00
Eliminates Barriers:	9.78
Active Transportation Network Connectivity:	7.56
Addresses Documented Need:	6.00
Access to Jobs:	9.11
Exclusive Path:	3.78
Connection to School:	3.89
Area of Identified Hazard:	3.00
Local Support:	3.56
Scope of Benefit:	3.33
Environmental Linkage:	3.44
Economic Development:	3.89
Multi-Modal Support:	2.78
Security & Resilience:	2.56
Transportation Enhancements & Livability:	3.33
Sustainability:	2.67



Project Name: Bird Creek Interceptor Trail

MTP Ranking: 17 Total Score: 69.11

Estimated Cost: \$375,000

Work Description:

Construct 8 ft' wide concrete trail with crosswalk and pedestrian refuge island at the trail terminus

Purpose & Needs Statement: This project will use an existing utility easement to provide direct connection between Lions Community Park and the existing shared-use path at Bonham Middle School, and increase safe crossing at Midway Drive, in an area that otherwise lacks sidewalks.

Project Sponsor: City of Temple

Extents: North side of Lions Community Park to Midway Drive (near Bonham Middle School)

Planning and Environmental Linkage Flags: P



ALL DEPICTED PROJECT ALIGNMENTS ARE CONCEPTUAL

Peak Period Traffic Flow:	0.00
Safety - Crash Rate:	0.00
Linkage to Other Plan:	4.00
Local Priority:	1.00
Eliminates Barriers:	9.33
Active Transportation Network Connectivity:	6.89
Addresses Documented Need:	6.44
Access to Jobs:	7.11
Exclusive Path:	3.56
Connection to School:	3.67
Area of Identified Hazard:	2.89
Local Support:	3.33
Scope of Benefit:	3.00
Environmental Linkage:	3.44
Economic Development:	3.56
Multi-Modal Support:	2.56
Security & Resilience:	2.33
Transportation Enhancements & Livability:	3.33
Sustainability:	2.67