

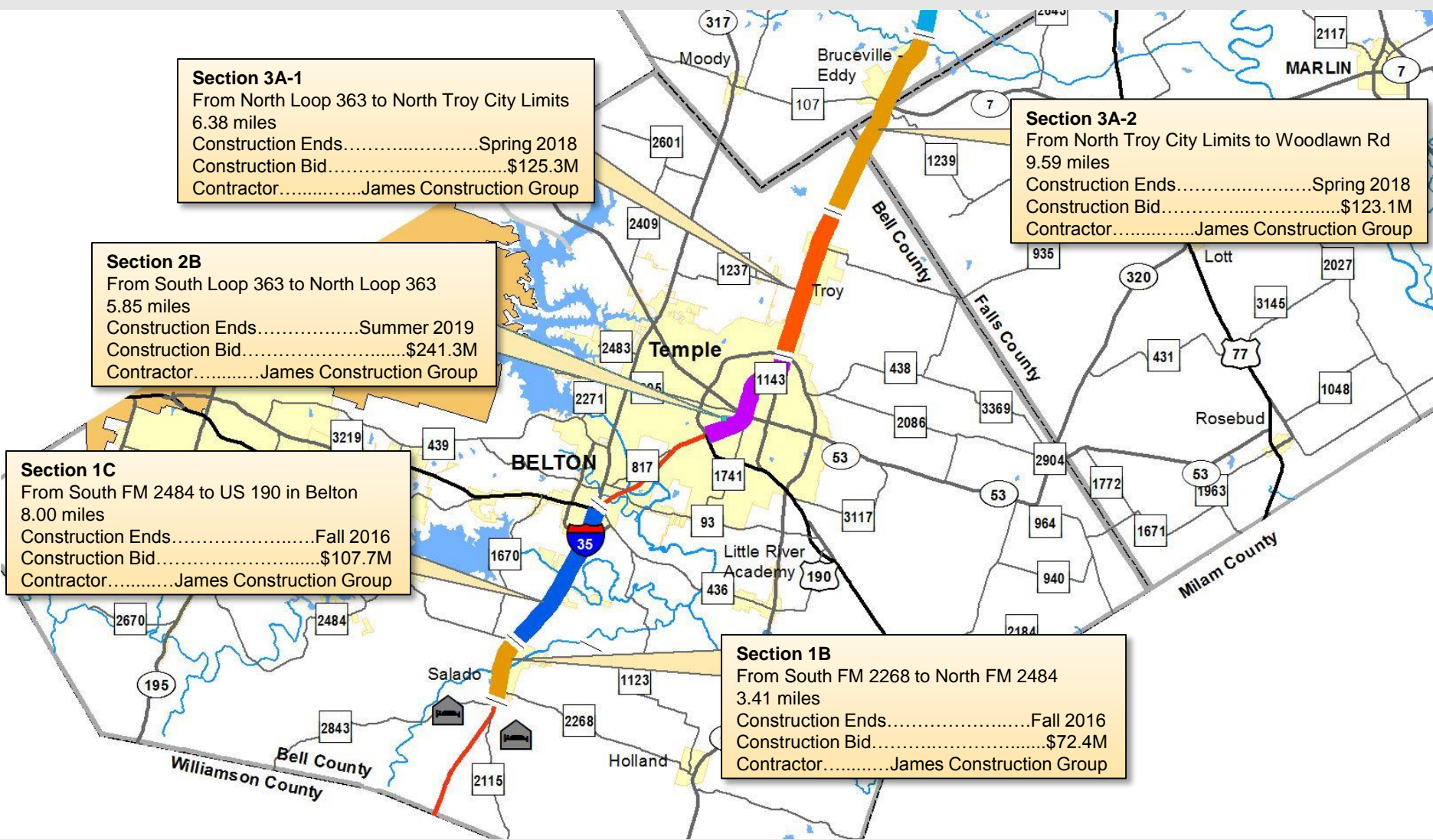


KTMPD Area Project Update

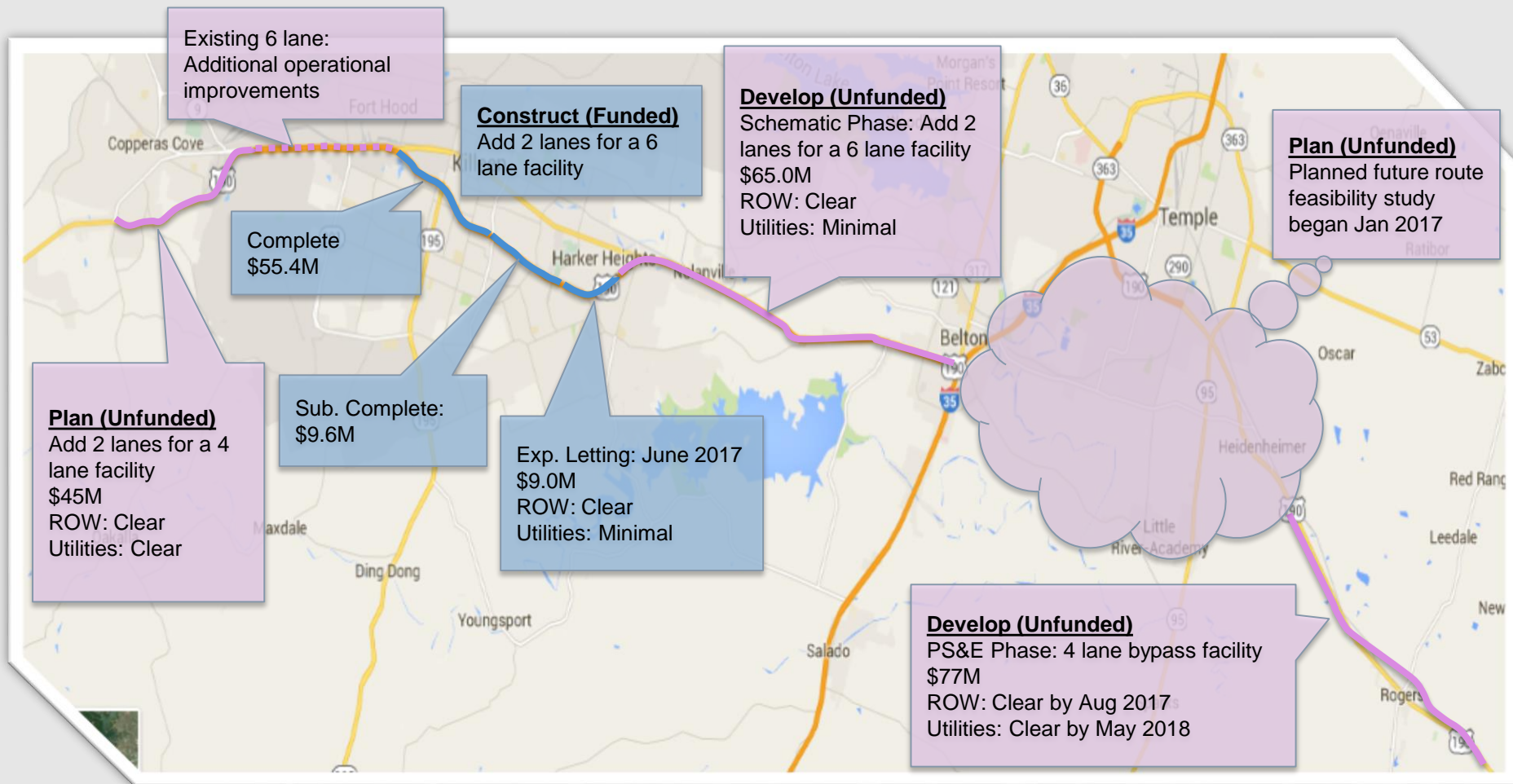
Bobby Littlefield Jr., P.E.
District Engineer
Waco District



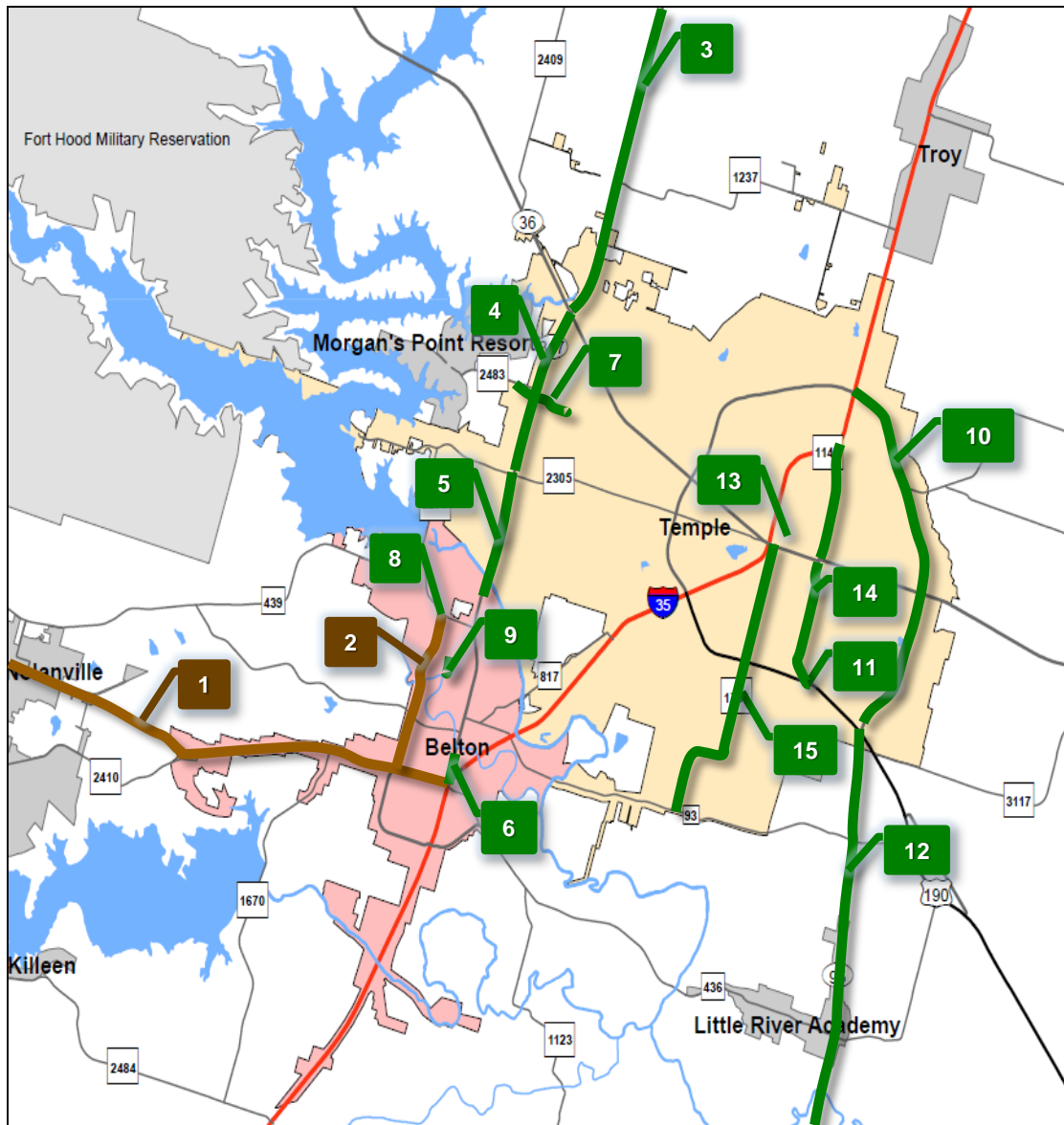
I-35 Reconstruction Project– Bell County



US 190 Corridor Improvements



Recent and Upcoming Projects



Developing Schematics – Projects not yet funded

1: US 190 – FM 2410 to IH 35
Widen from 4 to 6 lanes

2: SL 121 – US 190 to FM 439
Widen to urban 5 lane section

Funded

3: SH 317 – McLennan C.L. to SH 36
State/Fed funded – FY 16
Add passing lanes & shoulders

4: SH 317 – SH 36 to FM 2305
State/Fed funded – FY 15
Add continuous left turn lane

5: SH 317 – FM 2305 to N of FM 439
State/Local funded – FY 16
Widen to urban 5 lane section

6: SH 317 – Ave C to Ave J
Fed/Local funded – FY 17
Sidewalks

7: Prairie View – FM 2483 to Pea Ridge
Fed/Local funded – FY 17
Widen Prairie View Rd & sidewalks

8: SL 121 @ Sparta Rd
State/Fed funded – FY 19
Improve traffic signal

9: Commerce Dr/University Blvd
Fed/Local funded – FY 18
Sidewalks

10: LP 363– IH 35 to US 190
State/Fed funded – FY 18
Mill and overlay

11: Lp 363 @ SS 290
State/Fed/Local funded – FY 16
Phase I interchange reconstruction

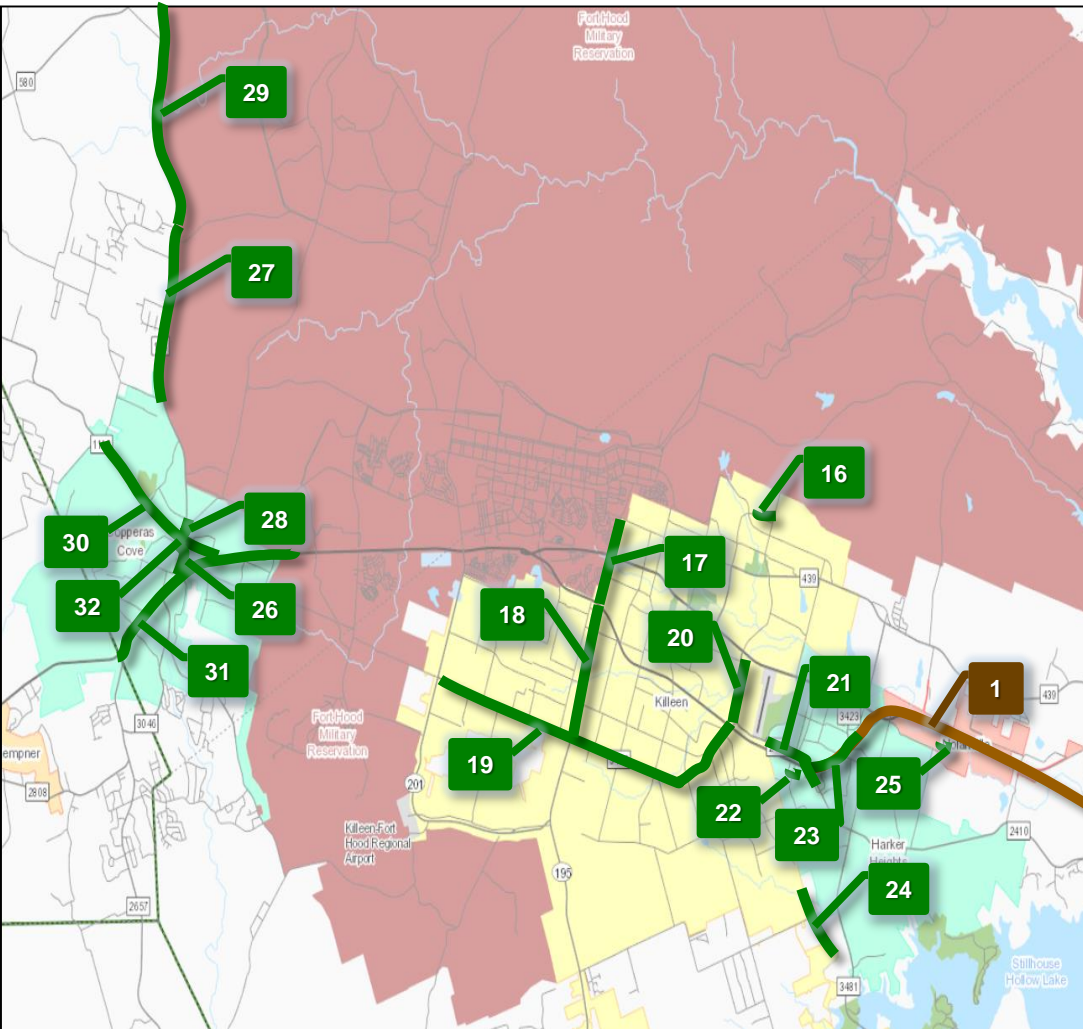
12: SH 95 – LP 363 to Holland City
State/Fed funded – FY 18, 19
Add passing lanes & mill & overlay

13: N 31st St – SH 53 to Jack White
Fed/Local funded – FY 16
Sidewalks

14: SS290 – IH 35 to US 190
State/Fed funded – FY 17, 19
Mill and overlay

15: FM 1741 – SH 53 to FM 93
State/Fed funded – FY 17, 18
Mill and overlay

Recent and Upcoming Projects



Developing Schematic – Project not yet funded

- 1: US 190 – FM 2410 to IH 35**
Widen from 4 to 6 lanes

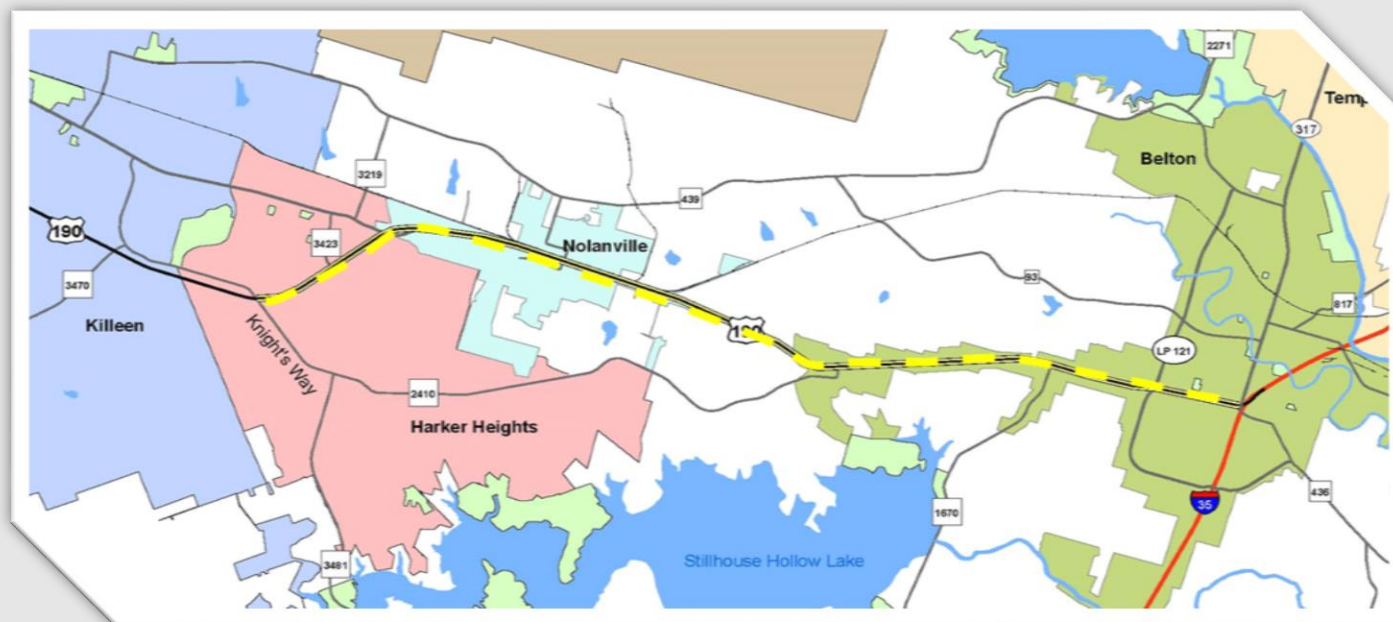
Funded

- | | |
|--|--|
| 16: Traverse Dr– Brookhaven Elem.
Fed/Local funded – FY 17
Shared-use path | 17: SH 195 – Rancier Ave to US 190
State/Fed funded – FY 18
Mill and overlay |
| 18: SH 195 – US 190 to FM 3470
State/Fed funded – FY 16
Mill and inlay | 19: FM 3470 – SH 201 to FM 2410
State/Fed funded FY 17
Mill and inlay |
| 20: FM 2410 – BU 190 to FM 3470
State/Fed funded – FY 18
Overlay | 21: FM 2410 – Roy Reynolds to Commerc.
State/Fed funded – FY 16
Widen from 2 to 4 lanes w/turn lane |
| 22: Heights Dr & Commercial Dr
Fed/Local funded – FY 18
Construct round-about | 23: US 190 – W of FM 2410 to FM 3423
State/Fed funded – FY 17
Widen from 4 to 6 lanes |
| 24: Rosewood Dr – Chaparral Area
Fed/Local funded – FY 18
Shared Use Path | 25: Old Nolanville Rd
Fed/Local funded – FY 18
Sidewalks, Curb & Gutter |
| 26: FM 116 – FM 1113 to BU 190
Fed/State funded - FY 18
Base repair and overlay | 27: FM 116 – Cactus Ln to House Crk Brdg
State/Fed funded – FY 17
Add left turn lane |
| 28: FM 116 – Anderson Ave to Ave B
Fed/State funded – FY 16
Rehab & add cont. left turn lanes | 29: FM 116 – Cactus Ln to US 84
State/Fed funded – FY 15
Add passing lanes & shoulders |
| 30: FM 1113 – BU 190 to Grimes Cr.
Fed/State funded – FY 19
Base repair and overlay | 31: BU 190 – FM 2657 to SH 9
Fed/State funded – FY 16
Mill and inlay |
| 32: FM 1113 – Downtown
Fed/State/Local funded – FY 17
Streetscape improvements | |

KTMP0 Strategic Project Development

– #1: US 190 from FM 2410 in Harker Heights to IH 35

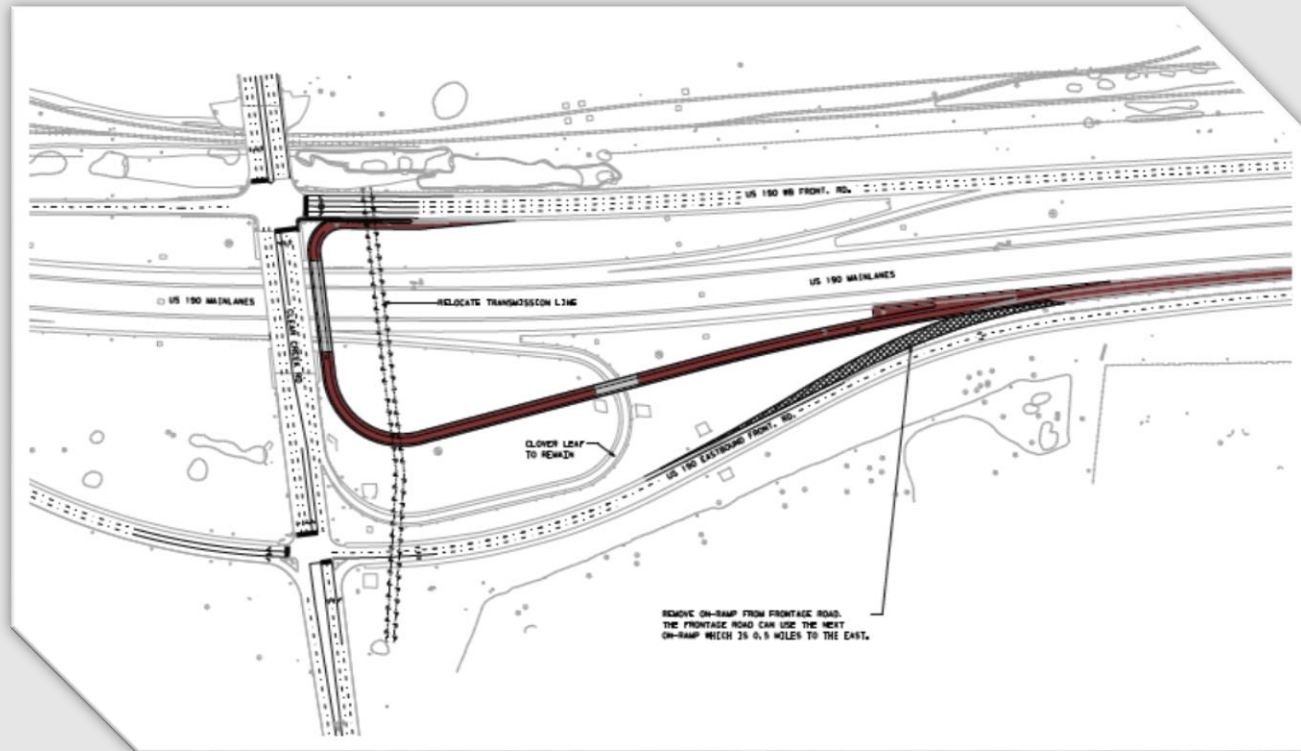
- Schematic being developed
- Value Engineering study completed for west section (FM 2410 to FM 2410)



KTMP0 Strategic Project Development

– #2: US 190 Turn-Around Bridge at Clear Creek:

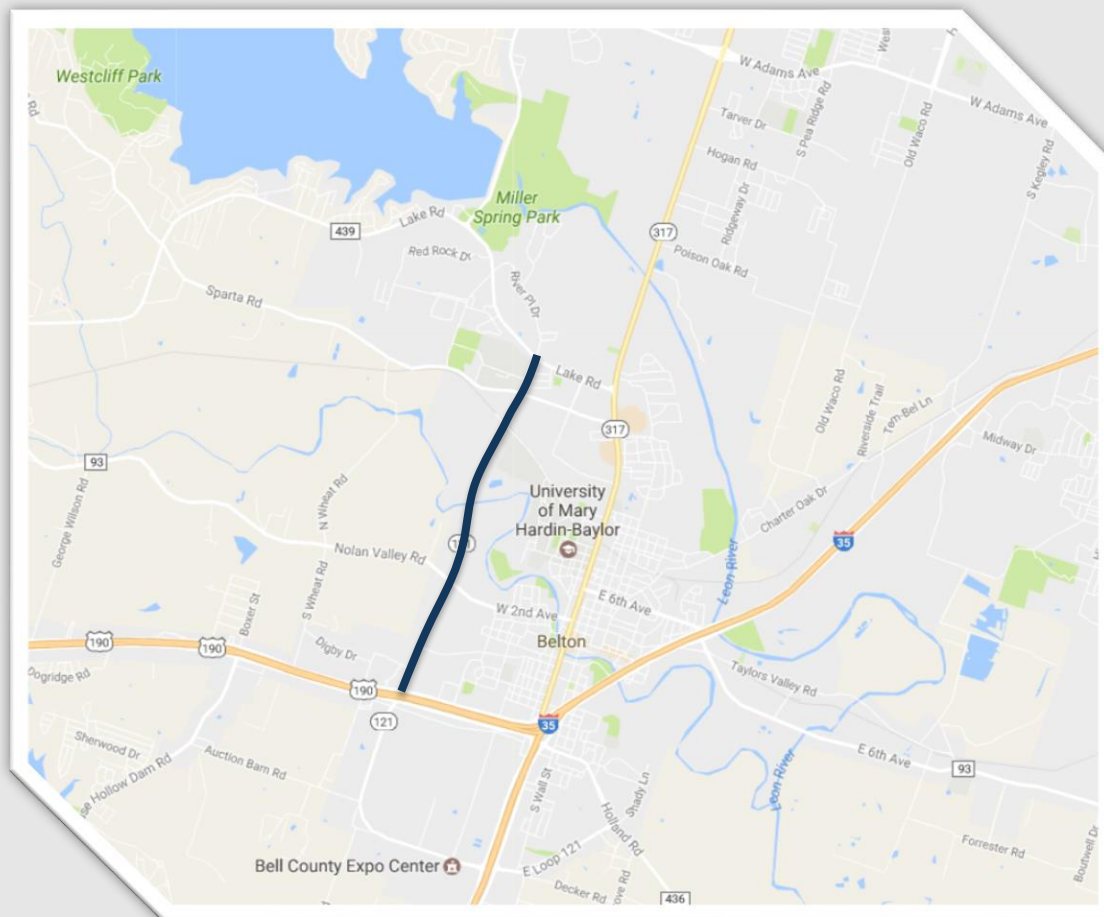
- Initial concept has been refined
- TxDOT has consultant working on design



KTMP0 Strategic Project Development

– #3: Lp 121 from US 190 to FM 439

- Schematic is being developed
- ROW determinations Will be based on approved schematic



KTMP0 Strategic Project Development

– #4: SH 195 Turn-Arounds at Stan Schlueter

- Initial concept was reviewed for ease of implementation
- Full design will move forward when project is funded



KTMP0 Strategic Project Development

– #5: Salado Main Street

- Initial concepts have been developed and discussed
- Meetings are on-going with Salado to determine scope of project



I-14 Steps for Interstate designation of first section

- Finalized the technical assessment report for the 25-mile section of US 190 from I-35 to Fort Hood (April 2016).
- Received Texas Transportation Commission approval for designation (April 2016).
- Draft technical assessment report submitted to FHWA for initial review (May 2016).
- Process of requesting the Federal Highway Administration (FHWA) and the American Association of State Highway and Transportation Officials (AASHTO) approvals of designation (Spring/Summer 2016).
- Received FHWA approval (December 2016).
- Anticipated Texas Transportation Commission adoption (January 2017)
- Signing of I-14 (anticipated early 2017).



Thank You

Questions?