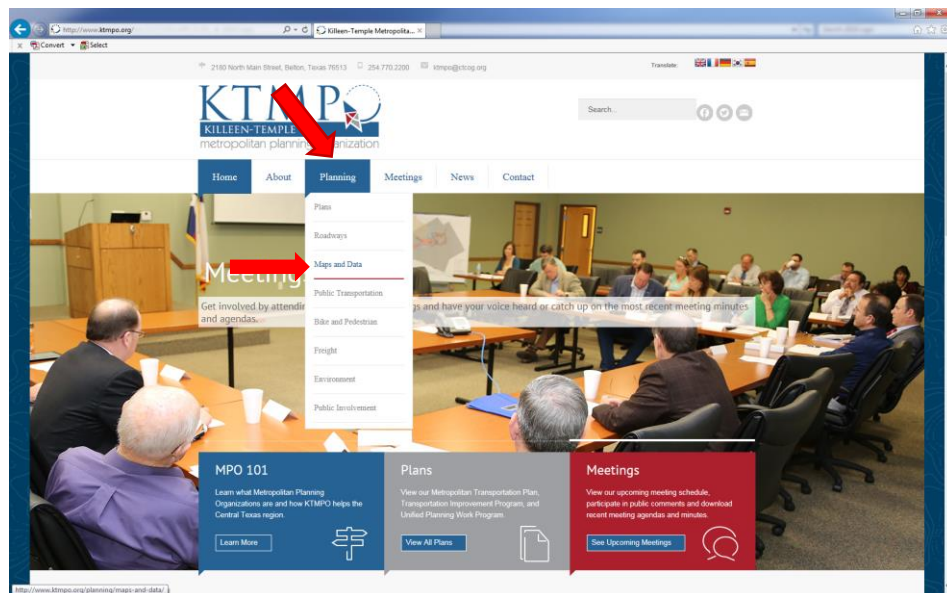


Freight and Safety Web Map User Guide

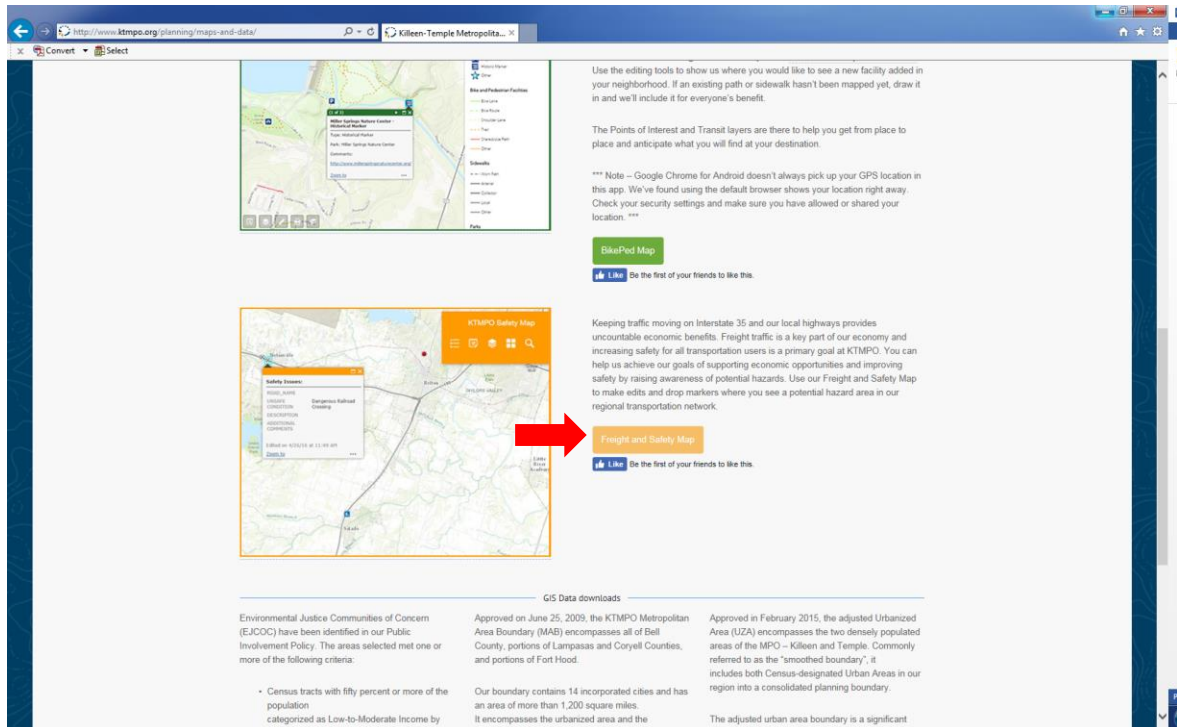
Keeping traffic moving on Interstate 35 and our local highways provides uncountable economic benefits. Freight traffic is a key part of our economy and increasing safety for all transportation users is a primary goal at KTMP. You can help us achieve our goals of supporting economic opportunities and improving safety by raising awareness of potential hazards. Use our Freight and Safety Map to make edits and drop markers where you see a potential hazard area in our regional transportation network.

This user guide will help you out as you map out freight and safety concerns throughout the region. Follow the steps below for how to use the Freight and Safety Web Map App.

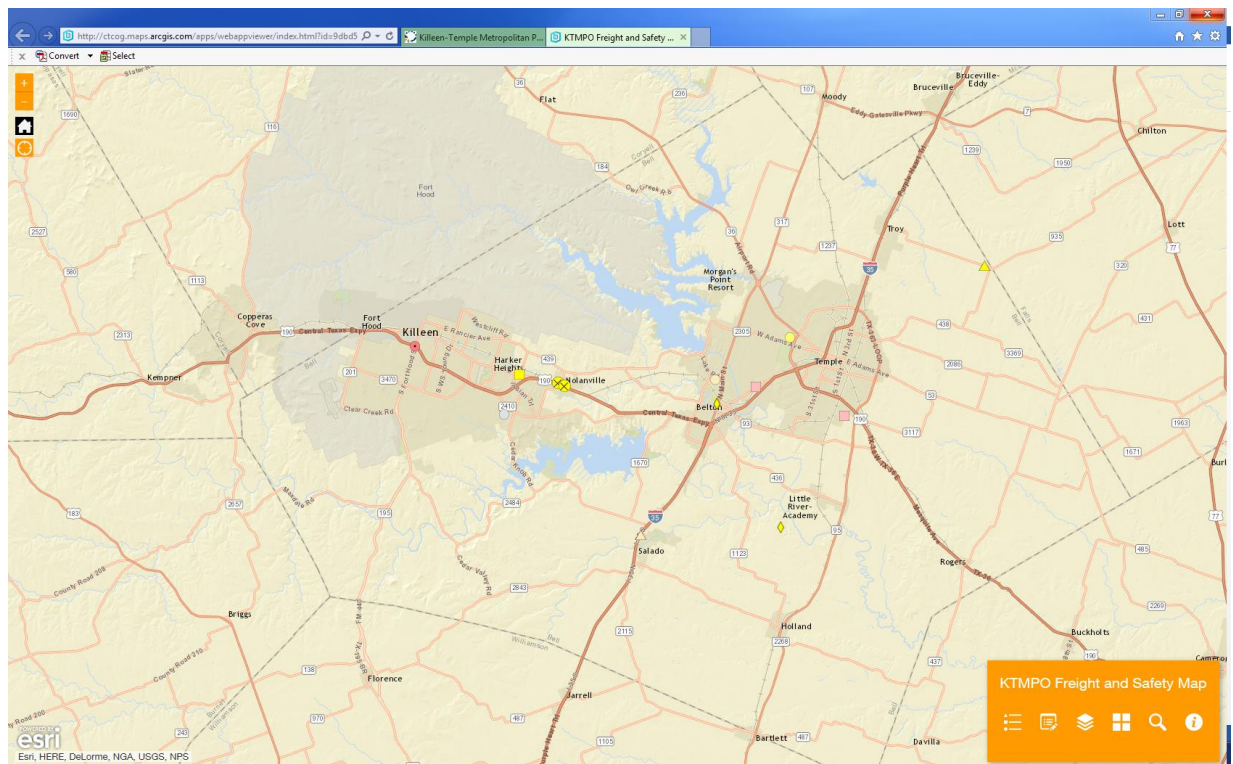
Step 1: Open www.KTMPO.org. Go to the planning tab and click on Maps and Data.



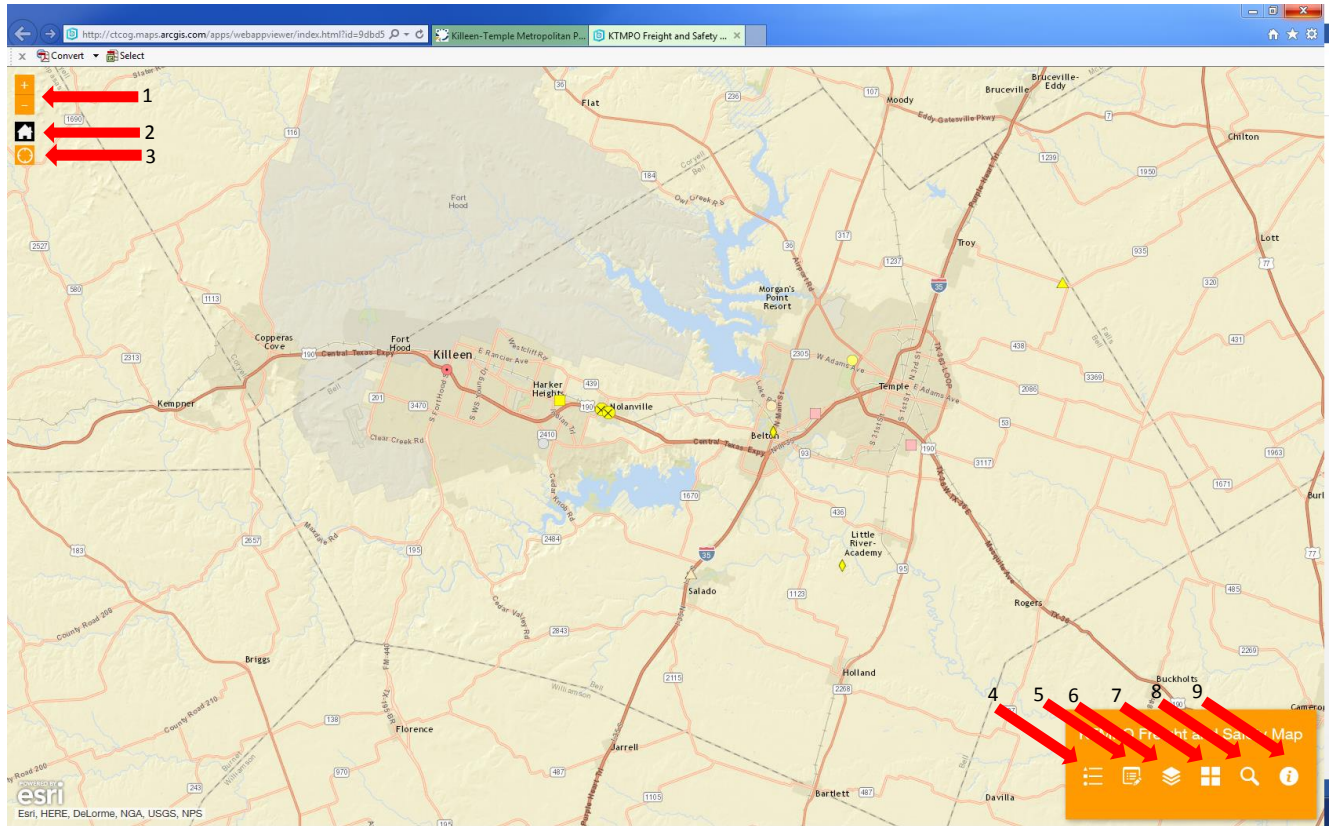
Step 2: Under the Maps and Data tab, scroll down to find the Freight and Safety map. It is the third map listed. To open up the map click on the orange button that says “Freight and Safety Map”. (See picture on page 2)



The map will open showing the KTMP region highlighting freight and safety concerns throughout the MPO region.



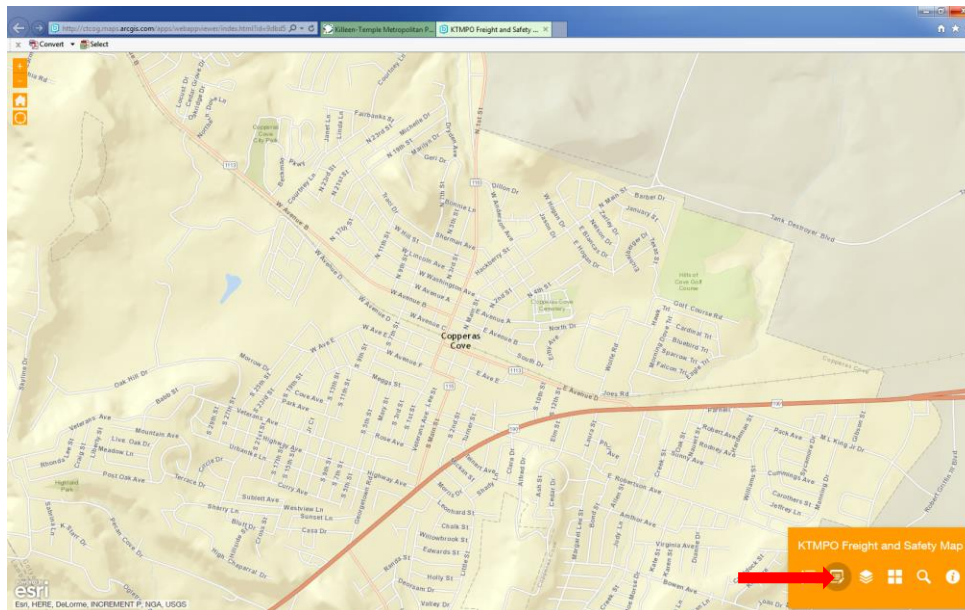
Map Features:



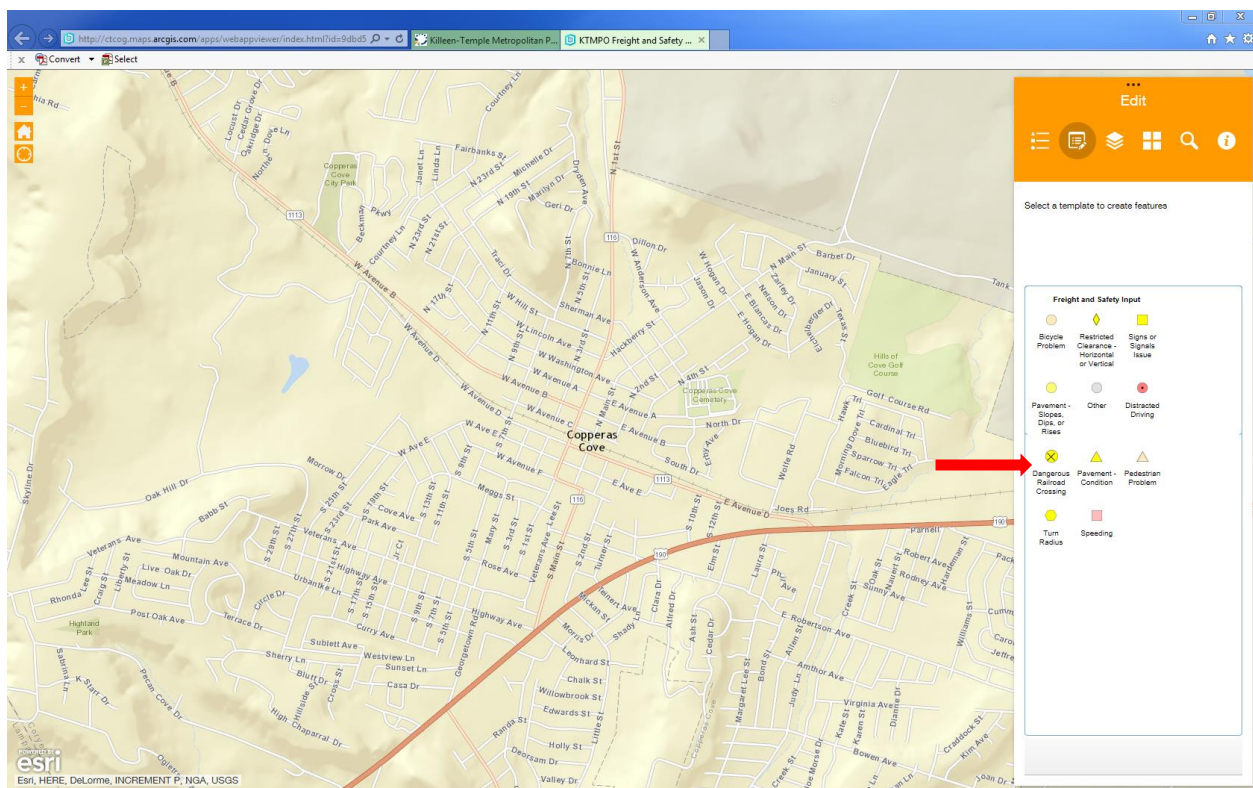
Key:

1. Zoom Function—Allow users to zoom in and out of the map
2. Home— Brings map out to full view
3. My Location—Shows users location
4. Legend—Shows the features for each layer
5. Edit—Allow users to make edits on the map
6. Layer List—Allow users to turn on and off layers
7. Basemap Gallery—Allow users to change the map style
8. Search Bar—Allow users to search addresses or map layers using the drop-down arrow
9. Information—Provides information about the map

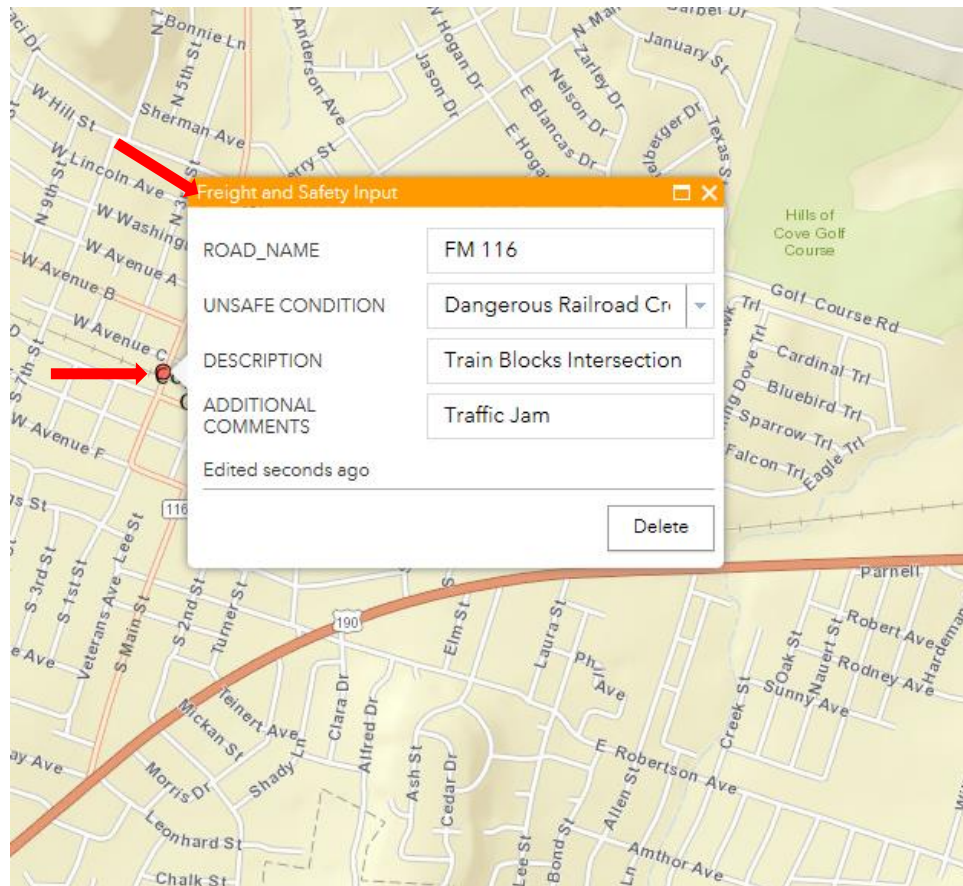
Step 3: To add a feature to the map, click on the Edit Tools icon in the bottom right corner.



A window will appear that will allow you to select different freight and safety issues. For the purpose of this user guide, we will use the “Dangerous Railroad Crossing” to map out freight and safety issues. Please click on the “Dangerous Railroad Crossing” icon.



Step 4: Use your cursor to map out where the dangerous railroad crossing is located. Left click to plot your point. Once you mapped out your dangerous railroad crossing issue, a window will appear. Please fill in as much information that you can.

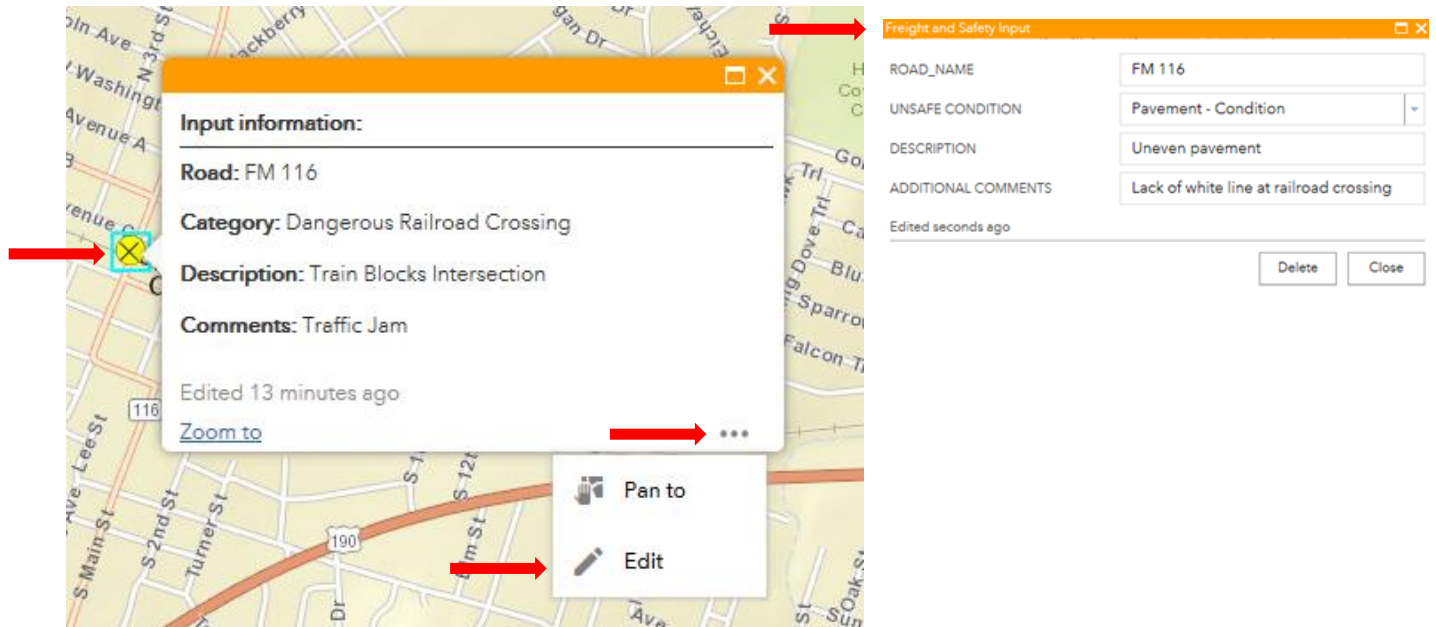


Step 5: Exit the editing tool to finish making your edits.



Step 6: Making edits to your point feature.

To make edits, click on the feature and a window will pop up. In the lower right corner of the window, you will see three dots, click on them and click the Edit Tab to start editing your feature. This will bring you back to the data table. Update the table for information.



Step 7: Close the edit tool to complete your edits.



Note how the symbol changed from “Dangerous Railroad Crossing” to “Pavement-Condition”.

Thank you for your input on the Killeen-Temple MPO Freight and Safety Web Map. We are always looking for suggestions or improvements to our Freight and Safety Web Map. Please contact KTMP staff if you have any questions, suggestions or improvements so that we can provide you with a fast and convenient to tell us about freight and safety issues.